



# WAIPA DISTRICT SPEED LIMITS BYLAW 2019

# Table of Contents

---

1.	Short Title .....	3
2.	Definitions.....	3
3.	Application of this Bylaw .....	3
4.	Bylaw Speed Limits.....	3
5.	Consultation.....	4
6.	Speed Limits Signs .....	4
7.	Register of Speed Limits .....	4
8.	Offences and Penalties .....	4
9.	Amendment of schedules .....	4
10.	Revocations.....	5
11.	Schedule of Amendments.....	5
	SCHEDULE 1: Register of Roads in Waipa District with a Speed Limit of 20km/h .....	6
	SCHEDULE 2: Register of Roads in Waipa District with a Speed Limit of 30km/h .....	7
	SCHEDULE 3: Register of Roads in Waipa District with a Speed Limit of 40km/h .....	8
	SCHEDULE 4: Register of Roads in Waipa District with an Urban Traffic Area speed limit of 50 km/h .....	13
	SCHEDULE 5: Register of Roads in Waipa District with a Speed Limit of 60km/h .....	14
	SCHEDULE 6: Register of Roads in Waipa District with a Speed Limit of 70km/h .....	19
	SCHEDULE 7: Register of Roads in Waipa District with a speed limit of 80 km/h.....	20
	SCHEDULE 8: Register of Roads in Waipa District with a variable speed limit .....	28
	SCHEDULE 9: Waipa District Speed Limits maps .....	33

*In exercise of the powers and authorities vested in it by Section 145 of the Local Government Act 2002 and the Land Transport Rule: Setting of Speed Limits 2017, Rule 54001/2017 made pursuant to Section 160(3) of the Land Transport Act 1998, the Waipa District Council makes this Bylaw to set speed limits.*

## 1. Short Title

This bylaw may be referred to as the Waipa District Council Speed Limits Bylaw 2019 and, except for those parts declared to be limited or extended in their operation; it shall apply to the whole of the Waipa District as from time to time constituted.

## 2. Definitions

For the purposes of this Bylaw the following definitions shall apply:

Term	Definition
Council	the Waipa District Council.
Road	has the same meaning as in Part 2 of the Rule.
Rule	means the Land Transport Rule: Setting of Speed Limits 2017 Rule 54001/2017.
Speed Limit	has the same meaning as in Part 2 of the Rule.
Urban Traffic Area	has the same meaning as in Part 2 of the Rule
Vehicle	has the same meaning as in Section 2(1) of the Land Transport Act 1998.

## 3. Application of this Bylaw

This Bylaw applies to all roads under the control and/or management of the Council. This Bylaw does not apply to roads included on the New Zealand Transport Agency (NZTA) state highway network

## 4. Bylaw Speed Limits

- (a) The Council may, by resolution, set speed limits or designate urban traffic areas for any roads under the Council's control and/or management.
- (b) The Council may, by resolution, set speed limits for roads in any designated location under the Council's control and/or management.
- (c) In setting speed limits under Clauses 4(a) or 4(b) the Council may only set speed limits of 10, 20, 30, 40, 50, 60, 70, 80,100 km/h or a variable speed limit in a school zone.
- (d) The Council may amend or revoke a resolution made under Clauses 4(a) or 4(b) at any time.

## 5. Consultation

- (a) Subject to Clause 5(b), before passing a resolution under Clause 4(a) or amending or revoking such a resolution under Clause 4(d), the Council shall undertake the consultation process prescribed in sections 2.5 or 2.6 and section 4.4(2) of the Rule.
- (b) Clause 5(a) shall not apply if the Council is passing a resolution in accordance with sections 6 or 7 of the Rule.

## 6. Speed Limits Signs

Where a speed limit is set or amended the Council must mark such areas to which the speed limit applies by signs as required by the Rule.

## 7. Register of Speed Limits

The Council shall maintain a register of speed limits that records all speed limits, except temporary speed limits, for the roads under its jurisdiction as required by Section 2.8 of the Rule.

Refer to Schedules 1 to 9 for the complete Register of Speed Limits in Waipa District:

- Schedule 1 Roads with a speed limit of 20 km/h
- Schedule 2 Roads with a speed Limit of 30km/h
- Schedule 3 Roads with a speed limit of 40 km/h
- Schedule 4 Roads with an Urban Traffic Area speed limit of 50 km/h
- Schedule 5 Roads with a speed limit of 60 km/h
- Schedule 6 Roads with a speed limit of 70 km/h
- Schedule 7 Roads with a speed limit of 80 km/h
- Schedule 8 Roads with a variable speed limit
- Schedule 9 Index and Maps 1-30 of Speed Limits in Waipa District

## 8. Offences and Penalties

Every person commits an offence against this bylaw who operates a vehicle in contravention of any speed limit set under this Bylaw or by the Rule unless otherwise authorised to do so.

Every person who commits an offence against this Bylaw shall be liable to an infringement fee in accordance with Part II Speeding Offences scale of fees from the Second Schedule (Infringement Offences and Fees) of the Land Transport Act 1998 or on summary conviction to a maximum fine of \$20,000.00 pursuant to Section 242(4) of the Local Government Act 2002.

## 9. Amendment of schedules

The Council may by resolution add to, amend, rescind or reinstate any part of any Schedule of this Bylaw.

## 10. Revocations

The Waipa District Speed Limits Bylaw 2016 is hereby revoked.

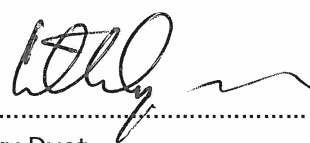
## 11. Schedule of Amendments

Date of Council Resolution	Clause(s)	Summary of amendment

The foregoing Bylaw was made by the **WAIPA DISTRICT COUNCIL** by Special Consultative Procedure and confirmed at a meeting of Council held on 27 August 2019. This Bylaw becomes operative on the 4 November 2019.

**IN WITNESS WHEREOF** the Common Seal of the **WAIPA DISTRICT COUNCIL** was hereunto affixed pursuant to a resolution of Council passed on 27 August 2019 in the presence of:

  
..... Mayor  
Jim Mylchreest

  
..... Chief Executive  
Garry Dyet

## **SCHEDULE 1: Register of Roads in Waipa District with a Speed Limit of 20km/h**

---

The roads or areas described in this Schedule or as shown on a map referenced in this schedule are declared to have a speed limit of 20 km/h.

### **Karapiro:**

(Refer to Map 8)

<b>Road</b>	<b>Description where 20km/h speed limit applies</b>	<b>Date speed limit comes in to force</b>	<b>Legal instrument</b>
Hydro Road	from Maungatautari Road across the Dam to Ariki Street	4 November 2019	Waipa District Speed Limits Bylaw 2019

---

## **SCHEDULE 2: Register of Roads in Waipa District with a Speed Limit of 30km/h**

---

The roads or areas described in this Schedule or as shown on a map referenced in this schedule are declared to have a speed limit of 30 km/h.

---

### SCHEDULE 3: Register of Roads in Waipa District with a Speed Limit of 40km/h

The roads or areas described in this Schedule or as shown on a map referenced in this schedule are declared to have a speed limit of 40 km/h.

#### Cambridge:

Road	Description where 40km/h speed limit applies	Date speed limit comes in to force	Legal instrument	Map
Alley Place	All	4 November 2019	Waipa District Speed Limits Bylaw 2019	1
Alpha Street	from Bryce Street to the eastern end of Alpha Street	4 November 2019	Waipa District Speed Limits Bylaw 2019	1
Anzac Street	All	4 November 2019	Waipa District Speed Limits Bylaw 2019	1
Bath Street	All	4 November 2019	Waipa District Speed Limits Bylaw 2019	1
Bowen Street	from Williams Street to Swayne Road	4 November 2019	Waipa District Speed Limits Bylaw 2019	1
Bryce Street	from a point 50 metres north of Duke Street to Duke Street	4 November 2019	Waipa District Speed Limits Bylaw 2019	1
Bryce Street	from Clare Street to Hamilton Road	4 November 2019	Waipa District Speed Limits Bylaw 2019	1
Burns Street	from Raleigh Street to Thompson Street	4 November 2019	Waipa District Speed Limits Bylaw 2019	1
Campbell Street	from Burns Street to Shakespeare Street	4 November 2019	Waipa District Speed Limits Bylaw 2019	1
Clare Street	from Grey Street to Victoria Street	4 November 2019	Waipa District Speed Limits Bylaw 2019	1
Commerce Street	All	4 November 2019	Waipa District Speed Limits Bylaw 2019	1
Dick Street	All	4 November 2019	Waipa District Speed Limits Bylaw 2019	1
Dominion Avenue	All	4 November 2019	Waipa District Speed Limits Bylaw 2019	1
Duke Street	from a point 70 metres east of Fort Street to Bryce Street	4 November 2019	Waipa District Speed Limits Bylaw 2019	1
Empire Street	All	4 November 2019	Waipa District Speed Limits Bylaw 2019	1
Fort Street	All	4 November 2019	Waipa District Speed Limits Bylaw 2019	1
Grey Street	from Williams Street to Hamilton Road	4 November 2019	Waipa District Speed Limits Bylaw 2019	1
Hallys Lane	All	4 November 2019	Waipa District Speed Limits Bylaw 2019	1



Road	Description where 40km/h speed limit applies	Date speed limit comes in to force	Legal instrument	Map
Hanlin Road	All	4 November 2019	Waipa District Speed Limits Bylaw 2019	3
James Street	All	4 November 2019	Waipa District Speed Limits Bylaw 2019	1
Kirkwood Street	All	4 November 2019	Waipa District Speed Limits Bylaw 2019	1
Lake Street	All	4 November 2019	Waipa District Speed Limits Bylaw 2019	1
Le Quesnoy Place	All	4 November 2019	Waipa District Speed Limits Bylaw 2019	1
Millicich Place	All	4 November 2019	Waipa District Speed Limits Bylaw 2019	1
Raleigh Street	from Burns Street to Shakespeare Street	4 November 2019	Waipa District Speed Limits Bylaw 2019	1
Shakespeare Street	from a point 50 metres south-west of Byron Street to a point 80 metres south-west of Thompson Street	4 November 2019	Waipa District Speed Limits Bylaw 2019	1
Swayne Road	from Bowen Street to a point 90 metres south of Tulip Drive	4 November 2019	Waipa District Speed Limits Bylaw 2019	1
Taylor Street	from Bowen Street to Grosvenor Street	4 November 2019	Waipa District Speed Limits Bylaw 2019	1
Thompson Street	from Southey Street to Shakespeare Street	4 November 2019	Waipa District Speed Limits Bylaw 2019	1
Victoria Street	from Queen Street to the Annual Bridge Posting (from a point 40m southeast of Le Quesnoy Place)	4 November 2019	Waipa District Speed Limits Bylaw 2019	1
Whitaker Street	All	4 November 2019	Waipa District Speed Limits Bylaw 2019	1
Williamson Street	All	4 November 2019	Waipa District Speed Limits Bylaw 2019	1
Williams Street	from Victoria Street to Grey Street	4 November 2019	Waipa District Speed Limits Bylaw 2019	1
Williams Street	from Grosvenor Street to Bowen Street	4 November 2019	Waipa District Speed Limits Bylaw 2019	1
Wilson Street	All	4 November 2019	Waipa District Speed Limits Bylaw 2019	1

## Te Awamutu:

Road	Description where 40km/h speed limit applies	Date speed limit comes in to force	Legal instrument	Map
Alexandra Street	from a point 230 metres west of Mutu Street to Arawata Street	4 November 2019	Waipa District Speed Limits Bylaw 2019	2
Arawata Street	from Alexandra Street to a point 45 metres north-east of Scout Lane	4 November 2019	Waipa District Speed Limits Bylaw 2019	2
Bank Street	from a point 65 metres south of Roche Street to Alexandra Street	4 November 2019	Waipa District Speed Limits Bylaw 2019	2
Bockett Avenue	All	4 November 2019	Waipa District Speed Limits Bylaw 2019	2
Brady Street	All	4 November 2019	Waipa District Speed Limits Bylaw 2019	2
Churchill Street	All	4 November 2019	Waipa District Speed Limits Bylaw 2019	2
Cucksey Crescent	All	4 November 2019	Waipa District Speed Limits Bylaw 2019	2
Domain Road	All	4 November 2019	Waipa District Speed Limits Bylaw 2019	2
George Street	All	4 November 2019	Waipa District Speed Limits Bylaw 2019	2
Gorst Avenue	All	4 November 2019	Waipa District Speed Limits Bylaw 2019	2
Harrison Drive	All	4 November 2019	Waipa District Speed Limits Bylaw 2019	4
Hazelmere Crescent	All	4 November 2019	Waipa District Speed Limits Bylaw 2019	2
Jackson Street	All	4 November 2019	Waipa District Speed Limits Bylaw 2019	2
Jacobs Street	All	4 November 2019	Waipa District Speed Limits Bylaw 2019	2
Mahoe Street	from Mutu Street to Arawata Street	4 November 2019	Waipa District Speed Limits Bylaw 2019	2
Mandeno Street	from a point 80 metres west of Hazelmere Crescent to Hazelmere Crescent	4 November 2019	Waipa District Speed Limits Bylaw 2019	2
Market Street	All	4 November 2019	Waipa District Speed Limits Bylaw 2019	2
Mutu Street	from Alexandra Street to Mahoe Street	4 November 2019	Waipa District Speed Limits Bylaw 2019	2
Palmer Street	All	4 November 2019	Waipa District Speed Limits Bylaw 2019	2

Road	Description where 40km/h speed limit applies	Date speed limit comes in to force	Legal instrument	Map
Park Road	from Albert Park Drive (State Highway 3) to Domain Road	4 November 2019	Waipa District Speed Limits Bylaw 2019	2
Princess Street	All	4 November 2019	Waipa District Speed Limits Bylaw 2019	2
Raikes Avenue	from Hazelmere Crescent to Cucksey Crescent	4 November 2019	Waipa District Speed Limits Bylaw 2019	2
Redoubt Street	All	4 November 2019	Waipa District Speed Limits Bylaw 2019	2
Rewi Street	from Princess Street to Alexandra Street	4 November 2019	Waipa District Speed Limits Bylaw 2019	2
Rickit Road	All	4 November 2019	Waipa District Speed Limits Bylaw 2019	2
Roche Street	All	4 November 2019	Waipa District Speed Limits Bylaw 2019	2
Scout Lane	All	4 November 2019	Waipa District Speed Limits Bylaw 2019	2
Selwyn Lane	All	4 November 2019	Waipa District Speed Limits Bylaw 2019	2
Sloane Street	from Vaile Street to Alexandra Street	4 November 2019	Waipa District Speed Limits Bylaw 2019	2
Spinley Street	All	4 November 2019	Waipa District Speed Limits Bylaw 2019	2
Teasdale Street	from a point 60 metres north-east of Downes Street to Bank Street	4 November 2019	Waipa District Speed Limits Bylaw 2019	2
Totara Street	All	4 November 2019	Waipa District Speed Limits Bylaw 2019	2
Vaile Street	All	4 November 2019	Waipa District Speed Limits Bylaw 2019	2
Walton Street	All	4 November 2019	Waipa District Speed Limits Bylaw 2019	2
Weona Court	All	4 November 2019	Waipa District Speed Limits Bylaw 2019	4

**Ngahinapouri:**  
(Refer to Map 9)

Road	Description where 40km/h speed limit applies	Date speed limit comes in to force	Legal instrument
Duncan Road	All	4 November 2019	Waipa District Speed Limits Bylaw 2019
Eric Lane	All	4 November 2019	Waipa District Speed Limits Bylaw 2019
Holmwood Drive	All	4 November 2019	Waipa District Speed Limits Bylaw 2019

## SCHEDULE 4: Register of Roads in Waipa District with an Urban Traffic Area speed limit of 50 km/h

The roads or areas described in this Schedule or as shown on a map referenced in this schedule are declared to be Urban Traffic Areas that have a speed limit of 50 km/h except for those roads or areas that are:

- (a) Described as having a different speed limit in the appropriate Schedule of this Bylaw; or
- (b) Shown on a map as having a different speed limit, as referenced in the appropriate Schedule of this Bylaw.

Description where 50km/h speed limit applies	Date speed limit comes in to force	Legal instrument	Map
Waipa District Speed limit Bylaw 2019 <b>Cambridge</b> Urban Traffic Area	4 November 2019	Waipa District Speed Limits Bylaw 2019	3
Waipa District Speed Limits Bylaw 2019 <b>Te Awamutu</b> and <b>Kihikihi</b> Urban Traffic Areas	4 November 2019	Waipa District Speed Limits Bylaw 2019	4
Waipa District Speed limit Bylaw 2019 <b>Pirongia</b> Urban Traffic Area	4 November 2019	Waipa District Speed Limits Bylaw 2019	5
Waipa District Speed limit Bylaw 2019 <b>Rukuhia</b> Urban Traffic Area	4 November 2019	Waipa District Speed Limits Bylaw 2019	6
Waipa District Speed limit Bylaw 2019 <b>Ohaupo</b> Urban Traffic Area	4 November 2019	Waipa District Speed Limits Bylaw 2019	7
Waipa District Speed Limits Bylaw 2019 <b>Karapiro</b> Urban Traffic Area	4 November 2019	Waipa District Speed Limits Bylaw 2019	8
Waipa District Speed limit Bylaw 2019 <b>Ngahinapouri</b> Urban Traffic Area	4 November 2019	Waipa District Speed Limits Bylaw 2019	9

## SCHEDULE 5: Register of Roads in Waipa District with a Speed Limit of 60km/h

The roads or areas described in this Schedule or as shown on a map referenced in this schedule are declared to have a speed limit of 60 km/h.

### Cambridge:

Road	Description where 60km/h speed limit applies	Date speed limit comes in to force	Legal instrument	Map
Fencourt Road	from a point 160 metres northwest of Flume Road to a point 1070 metres northwest of Flume Road	13 September 2016	Waipa District Speed Limits Bylaw 2016	18
Hana Lane	All	4 November 2019	Waipa District Speed Limits Bylaw 2019	18
Maungakawa Road	from a point 600 metres north-east of Thornton Road to Fencourt Road	4 November 2019	Waipa District Speed Limits Bylaw 2019	26
Roto-O-Rangi Road	from Lamb Street to a point 125 metres south of Seacharge Drive	4 November 2019	Waipa District Speed Limits Bylaw 2019	3
St Kilda Road	All	4 November 2019	Waipa District Speed Limits Bylaw 2019	3
Wells Place	from Moemoea Place to Fencourt Road	4 November 2019	Waipa District Speed Limits Bylaw 2019	3

### Te Awamutu:

(Refer to Map 4)

Road	Description where 60km/h speed limit applies	Date speed limit comes in to force	Legal instrument
Awanui Avenue	All	4 November 2019	Waipa District Speed Limits Bylaw 2019
Bond Road	from a point 380 metres north-east of Benson Road to the northern end of Bond Road	4 November 2019	Waipa District Speed Limits Bylaw 2019
Brill Road	All	4 November 2019	Waipa District Speed Limits Bylaw 2019
Bruce Road	All	4 November 2019	Waipa District Speed Limits Bylaw 2019
Frontier Road	from a point 220 metres west of Pakura Street to a point 990 metres west of Pakura Street	4 November 2019	Waipa District Speed Limits Bylaw 2019
Golf Road	from a point 580 metres east of Kihikihi Road(State Highway 3)to Kihikihi Road(State Highway 3)	4 November 2019	Waipa District Speed Limits Bylaw 2019

Road	Description where 60km/h speed limit applies	Date speed limit comes in to force	Legal instrument
Highden Road	All	4 November 2019	Waipa District Speed Limits Bylaw 2019
Lawbrooke Lane	All	4 November 2019	Waipa District Speed Limits Bylaw 2019
Leger Grove	All	4 November 2019	Waipa District Speed Limits Bylaw 2019
Linehan Road	All	4 November 2019	Waipa District Speed Limits Bylaw 2019
McGhie Road	from Kihikihi Road (State Highway 3) to a point 220 metres east of Meadowbank Crescent	4 November 2019	Waipa District Speed Limits Bylaw 2019
Molly Lane	All	4 November 2019	Waipa District Speed Limits Bylaw 2019
Moxham Road	All	4 November 2019	Waipa District Speed Limits Bylaw 2019
Paterangi Road	from a point 200 metres north of Daphne Street to a point 300 metres north of Harrison Drive	4 November 2019	Waipa District Speed Limits Bylaw 2019
St Leger Road	All	4 November 2019	Waipa District Speed Limits Bylaw 2019
Watson Place	All	4 November 2019	Waipa District Speed Limits Bylaw 2019

#### Pirongia:

(Refer to Map 5 &13)

Road	Description where 60km/h speed limit applies	Date speed limit comes in to force	Legal instrument
Sainsbury Road	All	4 November 2019	Waipa District Speed Limits Bylaw 2019

#### Rukuhia:

Road	Description where 60km/h speed limit applies	Date speed limit comes in to force	Legal instrument	Map
Lochiel Road	All	4 November 2019	Waipa District Speed Limits Bylaw 2019	6
Lowe Road	All	4 November 2019	Waipa District Speed Limits Bylaw 2019	6
Mystery Creek Road	from Airport Road (State Highway 21) to a point 1450 metres west of Angus Road	4 November 2019	Waipa District Speed Limits Bylaw 2019	6 & 20
Rukuhia Road	from Ohaupo Road (State Highway 3) to a point 810 metres west of Ohaupo Road (State Highway 3)	4 November 2019	Waipa District Speed Limits Bylaw 2019	6 & 11

**Karapiro:**

Road	Description where 60km/h speed limit applies	Date speed limit comes in to force	Legal instrument	Map
Fergusson Gully Road	All	4 November 2019	Waipa District Speed Limits Bylaw 2019	27
Hydro Road	from a point 15 metres north of Lake View Road to Tirau Road (State Highway 1)	4 November 2019	Waipa District Speed Limits Bylaw 2019	8
Judd Lane	All	4 November 2019	Waipa District Speed Limits Bylaw 2019	19
Maungatautari Road	from a point 800 metres north of Hydro Road to a point 850 metres south of Judd Lane	4 November 2019	Waipa District Speed Limits Bylaw 2019	8 & 19

**Ngahinapouri:**  
(Refer to Map 9)

Road	Description where 60km/h speed limit applies	Date speed limit comes in to force	Legal instrument
Reid Road	from Kakaramea Road (State Highway 39) to a point 380 metres west of Kakaramea Road (State Highway 39)	4 November 2019	Waipa District Speed Limits Bylaw 2019

**Koromatua:**  
(Refer to Map 10)

Road	Description where 60km/h speed limit applies	Date speed limit comes in to force	Legal instrument
Fletcher Road	All	4 November 2019	Waipa District Speed Limits Bylaw 2019

**Ohaupo:**

(Refer to Map 15&amp;16)

Road	Description where 60km/h speed limit applies	Date speed limit comes in to force	Legal instrument
Bank Road	All	4 November 2019	Waipa District Speed Limits Bylaw 2019

**Puahue:**

(Refer to Map 17)

Road	Description where 60km/h speed limit applies	Date speed limit comes in to force	Legal instrument
Puahue Road	from a point 300 metres west of Glasson Road to a point 450 metres east of Glasson Road	4 November 2019	Waipa District Speed Limits Bylaw 2019
Glasson Road	All	4 November 2019	Waipa District Speed Limits Bylaw 2019

**Te Pahu:**

(Refer to Map 21)

Road	Description where 60km/h speed limit applies	Date speed limit comes in to force	Legal instrument
Limeworks Loop Road	from Te Pahu Road to a point 263 metres west of Te Pahu Road	4 November 2019	Waipa District Speed Limits Bylaw 2019
Te Pahu Road	from a point 115 metres south of Martelletti Road to a point 920 metres south-east of Limeworks Loop Road	4 November 2019	Waipa District Speed Limits Bylaw 2019

**Roto-O-Rangi:**

(Refer to Map 24)

Road	Description where 60km/h speed limit applies	Date speed limit comes in to force	Legal instrument
Kairangi Road	from Roto-O-Rangi Road to a point 250 metres east of Roto-O-Rangi Road	4 November 2019	Waipa District Speed Limits Bylaw 2019

**Te Miro:**

(Refer to Map 25)

Road	Description where 60km/h speed limit applies	Date speed limit comes in to force	Legal instrument
Maungakawa Road	from Te Miro Road to a point 600 metres south of Te Miro Road	4 November 2019	Waipa District Speed Limits Bylaw 2019



Road	Description where 60km/h speed limit applies	Date speed limit comes in to force	Legal instrument
Te Miro Road	from a point 350 meters west of Maungakawa Road to a point 150 metres east of Maungakawa Road	4 November 2019	Waipa District Speed Limits Bylaw 2019

#### Horahora:

(Refer to Map 28)

Road	Description where 60km/h speed limit applies	Date speed limit comes in to force	Legal instrument
Maungatautari Road	from a point 40 metres north-east of Oreipunga Road to a point 470 metres north of Oreipunga Road	4 November 2019	Waipa District Speed Limits Bylaw 2019

#### Pukeatua:

(Refer to Map 29)

Road	Description where 60km/h speed limit applies	Date speed limit comes in to force	Legal instrument
Arapuni Road	from a point 400 metres south-west of Tari Road to a point 680 metres south-east of Tari Road	4 November 2019	Waipa District Speed Limits Bylaw 2019
Tari Road	All	4 November 2019	Waipa District Speed Limits Bylaw 2019

#### Wharepapa South:

(Refer to Map 30)

Road	Description where 60km/h speed limit applies	Date speed limit comes in to force	Legal instrument
Aotearoa Road	from a point 430 metres east of Owairaka Valley Road to Owairaka Valley Road	4 November 2019	Waipa District Speed Limits Bylaw 2019
Owairaka Valley Road	from a point 600 metres north of Aotearoa Road to Aotearoa Road	4 November 2019	Waipa District Speed Limits Bylaw 2019
Wharepapa South Road	from a point 200 metres west of Owairaka Valley Road to Owairaka Valley Road	4 November 2019	Waipa District Speed Limits Bylaw 2019

## **SCHEDULE 6: Register of Roads in Waipa District with a Speed Limit of 70km/h**

The roads or areas described in this Schedule or as shown on a map referenced in this schedule are declared to have a speed limit of 70 km/h.

<b>Road</b>	<b>Description where 70km/h speed limit applies</b>	<b>Date speed limit comes in to force</b>	<b>Legal instrument</b>	<b>Map</b>
Bruntwood Road	from Victoria Road to a point 430 metres northwest of Victoria Road	11 December 2012	Waipa District Speed Limits Bylaw 2012	3
Hannon Road	from Hautapu Road to a point 100 metres south of Hautapu Road	11 December 2012	Waipa District Speed Limits Bylaw 2012	3
Hautapu Road	from Victoria Road to a point 340 metres east of Peake Road	11 December 2012	Waipa District Speed Limits Bylaw 2012	3
Te Mawhai Road	from a point 485 metres west of Cruickshank Road to a point 790 metres east of Cruickshank Road	11 December 2012	Waipa District Speed Limits Bylaw 2012	23

## SCHEDULE 7: Register of Roads in Waipa District with a speed limit of 80 km/h

The roads or areas described in this Schedule or as shown on a map referenced in this schedule are declared to have a speed limit of 80 km/h.

Road	Description where 80km/h speed limit applies	Date speed limit comes in to force	Legal instrument	Map
Abergeldie Way	from a point 340 metres north of Taylor Street to Taylor Street	11 December 2012	Waipa District Speed Limits Bylaw 2012	3
Bruntwood Road	from a point 900 metres north-west of Peake Road to a point 430 metres north-west of Victoria Road (State Highway 1B)	4 November 2019	Waipa District Speed Limits Bylaw 2019	18
Cambridge Road	from a point 150m west of Kelly Road to a point 750 metres west of Peake Road	13 September 2016	Waipa District Speed Limits Bylaw 2016	3
Cambridge Road	from a point 200 metres south of Kaipaki Road to 190 metres west of Ihimaera Terrace	4 November 2019	Waipa District Speed Limits Bylaw 2019	3
Forrest Road	All	4 November 2019	Waipa District Speed Limits Bylaw 2019	18
Grasslands Drive	All	11 December 2012	Waipa District Speed Limits Bylaw 2012	3
Hannon Road	from a point 100 metres south of Hautapu Road to the southern end of Hannon Road	11 December 2012	Waipa District Speed Limits Bylaw 2012	3
Hautapu Road	from a point 340 metres east of Peake Road to a point 450 metres west of Hana Lane	11 December 2012	Waipa District Speed Limits Bylaw 2012	3 & 18
Lamb Street	from Cambridge Road to a point 350 metres north-west of Rowling Place	4 November 2019	Waipa District Speed Limits Bylaw 2019	3
Lamb Street	from a point 110 metres east of Carlyle Street to Maungatautari Road	4 November 2019	Waipa District Speed Limits Bylaw 2019	3
Marychurch Road	from Peake Road to Church Road	4 November 2019	Waipa District Speed Limits Bylaw 2019	18
Maungakawa Road	from Thornton Road to a point 600 metres north-east of Thornton Road	4 November 2019	Waipa District Speed Limits Bylaw 2019	26
Maungatautari Road	from a point 40 metres east of Carlyle Street to a point 310 metres east of Lamb Street	4 November 2019	Waipa District Speed Limits Bylaw 2019	3
Nagar Lane	All	11 December 2012	Waipa District Speed Limits Bylaw 2012	3

Road	Description where 80km/h speed limit applies	Date speed limit comes in to force	Legal instrument	Map
Peake Road	All	4 November 2019	Waipa District Speed Limits Bylaw 2019	3 & 18
Pickering Road	from Waipa District Bounary / a point 1600 metres west of Bruntwood Road to Bruntwood Road	4 November 2019	Waipa District Speed Limits Bylaw 2019	18
Racecourse Road	from Abergeldie Way to a point 100 metres east of Cambridge Road	4 November 2019	Waipa District Speed Limits Bylaw 2019	3 & 18
Silverwood Lane	All	4 November 2019	Waipa District Speed Limits Bylaw 2019	3
Swayne Road	from Zig Zag Road to Appleby Road	4 November 2019	Waipa District Speed Limits Bylaw 2019	3
Thornton Road	from a point 380 metres east of St Kilda Road to Maungakawa Road	4 November 2019	Waipa District Speed Limits Bylaw 2019	3 & 26
Victoria Road	from a point 220 meters north of Taylor Street to State Highway 1B	13 September 2016	Waipa District Speed Limits Bylaw 2016	3
Wiseman Road	All	4 November 2019	Waipa District Speed Limits Bylaw 2019	18
Zig Zag Road	All	4 November 2019	Waipa District Speed Limits Bylaw 2019	3

#### Te Awamutu:

Road	Description where 80km/h speed limit applies	Date speed limit comes in to force	Legal instrument	Map
Arapuni Road	from Brotherhood Road to Dick Street	4 November 2019	Waipa District Speed Limits Bylaw 2019	4 & 17
Cambridge Road	from a point 280 metres east of Thorncombe Road to a point 150 metres east of Puahue Road	4 November 2019	Waipa District Speed Limits Bylaw 2019	4 & 17
Cambridge Road	from a point 150 metres south-west of Long Road to a point 100 metres north-east of Story Road	4 November 2019	Waipa District Speed Limits Bylaw 2019	17
Coulter Road	All	4 November 2019	Waipa District Speed Limits Bylaw 2019	4, 16 & 17
Flat Road	from a point 300 metres north of Herbert Street to Golf Road	4 November 2019	Waipa District Speed Limits Bylaw 2019	4 & 17

Road	Description where 80km/h speed limit applies	Date speed limit comes in to force	Legal instrument	Map
Frontier Road	from a point 990 metres west of Pakura Street to a point 50 metres south-east of Inglefield Street	4 November 2019	Waipa District Speed Limits Bylaw 2019	4, 5 & 14
Golf Road	from a point 580 metres north-east of Kihikihi Road (State Highway 3) to Cambridge Road	4 November 2019	Waipa District Speed Limits Bylaw 2019	4 & 17
Hairini Road	from a point 45 metres east of Atkinson Street to Puahue Road	4 November 2019	Waipa District Speed Limits Bylaw 2019	4 & 17
Kay Road	All	4 November 2019	Waipa District Speed Limits Bylaw 2019	17
Kimberley Road	All	4 November 2019	Waipa District Speed Limits Bylaw 2019	4 & 17
Long Road	All	4 November 2019	Waipa District Speed Limits Bylaw 2019	17
Mandeno Road	All	4 November 2019	Waipa District Speed Limits Bylaw 2019	17
McGhie Road	from a point 220 metres east of Meadowbank Crescent to Flat Road	4 November 2019	Waipa District Speed Limits Bylaw 2019	4 & 17
Muir Road	All	4 November 2019	Waipa District Speed Limits Bylaw 2019	16 & 17
Ngaroto Road	All	4 November 2019	Waipa District Speed Limits Bylaw 2019	16
Park Road	from a point 830 metres north-west of Golf Road to Golf road	4 November 2019	Waipa District Speed Limits Bylaw 2019	4 & 17
Paterangi Road	from a point 300 metres north of Harrison Drive to a point 330 metres north-west of Ngaroto Road	4 November 2019	Waipa District Speed Limits Bylaw 2019	4 & 16
Payne Road	All	4 November 2019	Waipa District Speed Limits Bylaw 2019	17
Pokuru Road	from a point 85 metres west of Puniu Road to a point 50 metres west of the Puniu River Bridge	4 November 2019	Waipa District Speed Limits Bylaw 2019	4
Puahue Road	from Cambridge Road to a point 300 metres west of Glasson Road	4 November 2019	Waipa District Speed Limits Bylaw 2019	4 & 17
Rangiaowhia Road	All	4 November 2019	Waipa District Speed Limits Bylaw 2019	17

Road	Description where 80km/h speed limit applies	Date speed limit comes in to force	Legal instrument	Map
Storey Road	All	4 November 2019	Waipa District Speed Limits Bylaw 2019	17
Sutton Road	All	4 November 2019	Waipa District Speed Limits Bylaw 2019	16 & 17
Te Rahu Road	from a point 280 metres north-east of Preston Road to Ohaupo Road (State Highway 3)	4 November 2019	Waipa District Speed Limits Bylaw 2019	4, 16 & 17
Woodstock Road	All	4 November 2019	Waipa District Speed Limits Bylaw 2019	17

### Pirongia:

Road	Description where 80km/h speed limit applies	Date speed limit comes in to force	Legal instrument	Map
Bell Road	from Bird Road to Meadway Road	4 November 2019	Waipa District Speed Limits Bylaw 2019	12
Bird Road	All	4 November 2019	Waipa District Speed Limits Bylaw 2019	5 & 12
Butler Road	All	4 November 2019	Waipa District Speed Limits Bylaw 2019	5 & 13
Mangauika Road	from Baffin Street to District Boundary/ a point 630 metres north-west of Ormsby Road	4 November 2019	Waipa District Speed Limits Bylaw 2019	5 & 13
O'Shea Road	All	4 November 2019	Waipa District Speed Limits Bylaw 2019	5 & 13
Owen Road	All	4 November 2019	Waipa District Speed Limits Bylaw 2019	12
South Butler Road	All	4 November 2019	Waipa District Speed Limits Bylaw 2019	13
Waiari Road	All	4 November 2019	Waipa District Speed Limits Bylaw 2019	12

**Rukuhia:**

Road	Description where 80km/h speed limit applies	Date speed limit comes in to force	Legal instrument	Map
Angus Road	All	4 November 2019	Waipa District Speed Limits Bylaw 2019	20
Gillard Road	from a point 700 metres south of Gilmore Road to a point 2700 metres south of Gilmore Road	11 December 2012	Waipa District Speed Limits Bylaw 2012	11
Goodwin Road	from Kaipaki Road to a point 150 metres south of Kaipaki Road	4 November 2019	Waipa District Speed Limits Bylaw 2019	20
Herman Road	All	4 November 2019	Waipa District Speed Limits Bylaw 2019	11
Kaipaki Road	from a point 380 metres west of Mellow Road to a point 200 metres east of McEldownie Road	4 November 2019	Waipa District Speed Limits Bylaw 2019	20
McEldownie Road	All	4 November 2019	Waipa District Speed Limits Bylaw 2019	20
Mellow Road	All	4 November 2019	Waipa District Speed Limits Bylaw 2019	20
Middle Road	All	4 November 2019	Waipa District Speed Limits Bylaw 2019	6
Mystery Creek Road	from a point 1450 metres west of Angus Road to McEldownie Road	4 November 2019	Waipa District Speed Limits Bylaw 2019	6 & 20
Narrows Road	All	4 November 2019	Waipa District Speed Limits Bylaw 2019	6
Raynes Road	All	4 November 2019	Waipa District Speed Limits Bylaw 2019	6
Rukuhia Road	from a point 810 metres west of Ohaupo Road (State Highway 3) to Gillard Road	4 November 2019	Waipa District Speed Limits Bylaw 2019	11

**Karapiro:**

(Refer to Map 19)

Road	Description where 80km/h speed limit applies	Date speed limit comes in to force	Legal instrument
Maungatautari Road	from a point 850 metres south of Judd Lane to a point 170 metres south-east of John Hewitt Drive	4 November 2019	Waipa District Speed Limits Bylaw 2019

**Ohaupo:**

Road	Description where 80km/h speed limit applies	Date speed limit comes in to force	Legal instrument	Map
Lake Road	All	4 November 2019	Waipa District Speed Limits Bylaw 2019	15 & 16
McFall Road	All	4 November 2019	Waipa District Speed Limits Bylaw 2019	15 & 16
Ryburn Road	from a point 220 metres west of Ohaupo Road (State Highway 3) to Sing Road	4 November 2019	Waipa District Speed Limits Bylaw 2019	7 & 15
Sing Road	All	4 November 2019	Waipa District Speed Limits Bylaw 2019	15

**Koromatua:**

(Refer to Map 10)

Road	Description where 80km/h speed limit applies	Date speed limit comes in to force	Legal instrument
Barrett Road	All	4 November 2019	Waipa District Speed Limits Bylaw 2019
Jury Road	All	4 November 2019	Waipa District Speed Limits Bylaw 2019
Koromatua Road	from a point 200 metres west of Tuhikaramea Road to Kakaramea Road (State Highway 39)	4 November 2019	Waipa District Speed Limits Bylaw 2019
McCandish Road	All	4 November 2019	Waipa District Speed Limits Bylaw 2019
Wills Road	All	4 November 2019	Waipa District Speed Limits Bylaw 2019
Wood Road	All	11 December 2012	Waipa District Speed Limits Bylaw 2012

**Roto-O-Rangi:**

(Refer to Map 24)

Road	Description where 80km/h speed limit applies	Date speed limit comes in to force	Legal instrument
Roto-O-Rangi Road	from a point 350 metres north of Kairangi Road to a point 500 metres south-east of Kairangi Road	4 November 2019	Waipa District Speed Limits Bylaw 2019



## SCHEDULE 8: Register of Roads in Waipa District with a variable speed limit

The roads or areas described in this Schedule or as shown on a map referenced in this Schedule are declared to have a variable speed limit as indicated.

Speed Limit	Description	Date Speed Limit comes into force	Legal Instrument	Map
Variable speed limit of 40/50 km/h	<p><b>Variable Speed School Zones</b></p> <p>School zones marked on the maps described in Schedule 9 and identified in the legend as having a variable speed limit of 40km/h subject to the following conditions:</p> <ol style="list-style-type: none"> <li>The speed limit is 40 km/h when the variable speed limit signs are operating and the numerals "40" are displayed.</li> <li>The times during which the variable speed limit signs are permitted to operate are limited to: <ol style="list-style-type: none"> <li>35 minutes before the start of school until the start of school;</li> <li>20 minutes after the end of school, commencing no earlier than 5 minutes before the end of school;</li> <li>10 minutes at any time when vehicles are entering or leaving the school grounds or there is pedestrian or cycle activity on the road outside the school.</li> </ol> </li> <li>The speed limit is 50 km/h at all times when the variable speed limit signs are not operating.</li> </ol>		Waipa District Speed Limits Bylaw 2019	
Variable speed limit of 40/50 km/h	<p><b>Kihikihi Primary School</b></p> <p>Whitmore Street from a point 63 metres east of Hall Street to a point 50 metres east of Oliver Street.</p> <p>Oliver Street from a point 50 metres north of Whitmore Street to a point 156 metres south of Whitmore Street.</p> <p>Whitaker Street from a point 50 metres north of Whitmore Street to a point 100 metres south of Whitmore Street.</p>	11 December 2012	Waipa District Speed Limits Bylaw 2012	4
Variable speed limit of 40/50 km/h	<p><b>Leamington School</b></p> <p>Lamb Street from a point 40 metres west of Scott Street to a point 180 metres west of Carlyle Street.</p> <p>Scott Street from Lamb Street to a point 20 metres south-west of Noel Street</p>	4 November 2019	Waipa District Speed Limits Bylaw 2019	3

Speed Limit	Description	Date Speed Limit comes into force	Legal Instrument	Map
Variable speed limit of <b>40/50 km/h</b>	<b>Pekerau Primary School</b> Te Rahu Road from a point 185 metres west of Warburton Crescent to 200 metres east of Warburton Crescent. Warburton Crescent from Te Rahu Road to a point 50 metres west of Te Rahu Road.	10 September 2013	Waipa District Speed Limits Bylaw Amendment 2013	4
Variable speed limit of <b>40/50 km/h</b>	<b>Pirongia School</b> Beechey Street from a point 30 metres east of Franklin Street / SH39 to a point 60 metres west of McClure Street.	10 September 2013	Waipa District Speed Limits Bylaw Amendment 2013	5
Variable speed limit of <b>40/50 km/h</b>	<b>Southcity Christian School</b> Collins Road from a point 20 metres south-west of Rhonda Avenue/District Boundary to a point 75 metres south-west of the railway.	4 November 2019	Waipa District Speed Limits Bylaw 2019	11
Variable speed limit of <b>40/60 km/h</b>	<b>Variable Speed School Zones</b> School zones marked on the maps described in Schedule 9, and identified in the legend as having a variable speed limit of 40km/h subject to the following conditions:  1. The speed limit is 40 km/h when the variable speed limit signs are operating and the numerals "40" are displayed.  2. The times during which the variable speed limit signs are permitted to operate are limited to: (a) 35 minutes before the start of school until the start of school; (b) 20 minutes after the end of school, commencing no earlier than 5 minutes before the end of school; (c) 10 minutes at any time when vehicles are entering or leaving the school grounds or there is pedestrian or cycle activity on the road outside the school.  3. The speed limit is 60 km/h at all times when the variable speed limit signs are not operating.		Waipa District Speed Limits Bylaw 2019	
Variable speed limit of <b>40/60 km/h</b>	<b>Goodwood School</b> Fencourt Road from a point 295 metres northwest of Flume Road to a point 700 metres northwest of Flume Road.	13 September 2016	Waipa District Speed Limits Bylaw 2016	18

Speed Limit	Description	Date Speed Limit comes into force	Legal Instrument	Map
Variable speed limit of <b>60/80 km/h</b>	<p><b>Variable Speed School Zones</b></p> <p>School zones marked on the maps described in Schedule 9, and identified in the legend as having a variable speed limit of 60km/h subject to the following conditions:</p> <ol style="list-style-type: none"> <li>The speed limit is 60 km/h when the variable speed limit signs are operating and the numerals “60” are displayed.</li> <li>The times during which the variable speed limit signs are permitted to operate are limited to: <ol style="list-style-type: none"> <li>35 minutes before the start of school until the start of school;</li> <li>20 minutes after the end of school, commencing no earlier than 5 minutes before the end of school;</li> <li>10 minutes at any time when vehicles are entering or leaving the school grounds or there is pedestrian or cycle activity on the road outside the school.</li> </ol> </li> <li>The speed limit is 80 km/h at all times when the variable speed limit signs are not operating.</li> </ol>		Waipa District Speed Limits Bylaw 2019 NZ Gazette of 12 June 2019	
Variable speed limit of 60/80 km/h	<p><b>Kaipaki School</b></p> <p>Kaipaki Road from a point 100 metres west of Goodwin Road to a point 80 metres east of McEldownie Road</p> <p>Goodwin Road from Kaipaki Road to a point 60 metres south of Kaipaki Road</p> <p>McEldownie Road from Kaipaki Road to a point 60 metres north-east of Kaipaki Road</p>	4 November 2019	Waipa District Speed Limits Bylaw 2019	20
Variable speed limit of <b>60/80 km/h</b>	<p><b>Koromatua School</b></p> <p>Koromatua Road from a point 270 metres west of Wood Road to a point 570 metres west of Wood Road</p>	4 November 2019	Waipa District Speed Limits Bylaw 2019	10
Variable speed limit of <b>60/100 km/h</b>	<p><b>Variable Speed School Zones</b></p> <p>School zones marked on the maps described in Schedule 9, and identified in the legend as having a variable speed limit of 60km/h subject to the following conditions:</p> <ol style="list-style-type: none"> <li>The speed limit is 60 km/h when the variable speed limit signs are operating</li> </ol>		Waipa District Speed Limits Bylaw 2019	

Speed Limit	Description	Date Speed Limit comes into force	Legal Instrument	Map
	<p>and the numerals "60" are displayed.</p> <p>2. The times during which the variable speed limit signs are permitted to operate are limited to:</p> <ul style="list-style-type: none"> <li>(a) 35 minutes before the start of school until the start of school;</li> <li>(b) 20 minutes after the end of school, commencing no earlier than 5 minutes before the end of school;</li> <li>(c) 10 minutes at any time when vehicles are entering or leaving the school grounds or there is pedestrian or cycle activity on the road outside the school.</li> </ul> <p>3. The speed limit is 100 km/h at all times when the variable speed limit signs are not operating.</p>			
Variable speed limit of <b>60/100 km/h</b>	<p><b>Paterangi School</b></p> <p>Paterangi Road from a point 125m east of Bell Road to a point 425m east of Bell Road.</p>	13 September 2016	Waipa District Speed Limits Bylaw 2016	12
Variable speed limit of <b>60/100 km/h</b>	<p><b>Pokuru School</b></p> <p>Pokuru Road from a point 200m east of Candy Road to a point 100m west of Candy Road.</p> <p>Candy Road from the intersection with Pokuru Road to a point 120m northwest of that intersection</p>	13 September 2016	Waipa District Speed Limits Bylaw 2016	22

## SCHEDULE 9: Waipa District Speed Limits maps

---

<b>Map</b>	<b>Area covered</b>
Index	<b>Waipa District</b>
1	<b>Cambridge</b> 40 km/h Speed
2	<b>Te Awamutu</b> 40 km/h Speed
3	<b>Cambridge</b> Urban Traffic Area
4	<b>Te Awamutu</b> and <b>Kihikihi</b> Urban Traffic Area
5	<b>Pirongia</b> Urban Traffic Area
6	<b>Rukuhia</b> Urban Traffic Area
7	<b>Ohaupo</b> Urban Traffic Area
8	<b>Karapiro</b> Urban Traffic Area
9	<b>Ngahinapouri</b> Urban Traffic Area
10	<b>Koromatua</b> Rural Area
11	West of <b>Rukuhia</b> Rural Area
12	North of <b>Pirongia</b> Rural Area
13	West of <b>Pirongia</b> Rural Area
14	West of <b>Te Awamutu</b> Rural Area
15	South of <b>Ohaupo</b> Rural Area
16	North of <b>Te Awamutu</b> Rural Area
17	East of <b>Te Awamutu</b> Rural Area
18	North west of <b>Cambridge</b> Rural Area
19	South of <b>Karapiro</b> Rural Area
20	South east of <b>Rukuhia</b> Rural Area
21	<b>Te Pahu</b> Rural Area
22	<b>Pokuru</b> Rural Area
23	<b>Tokanui</b> Rural Area
24	<b>Roto-O-Rangi</b> Rural Area
25	<b>Te Miro</b> Rural Area
26	East of <b>Cambridge</b> Rural Area
27	East of <b>Karapiro</b> Rural Area
28	<b>Horahora</b> Rural Area
29	<b>Pukeatua</b> Rural Area
30	<b>Wharapapa South</b> Rural Area





Waikato District

Hamilton City

Matamata-Piako District

Otorohanga District

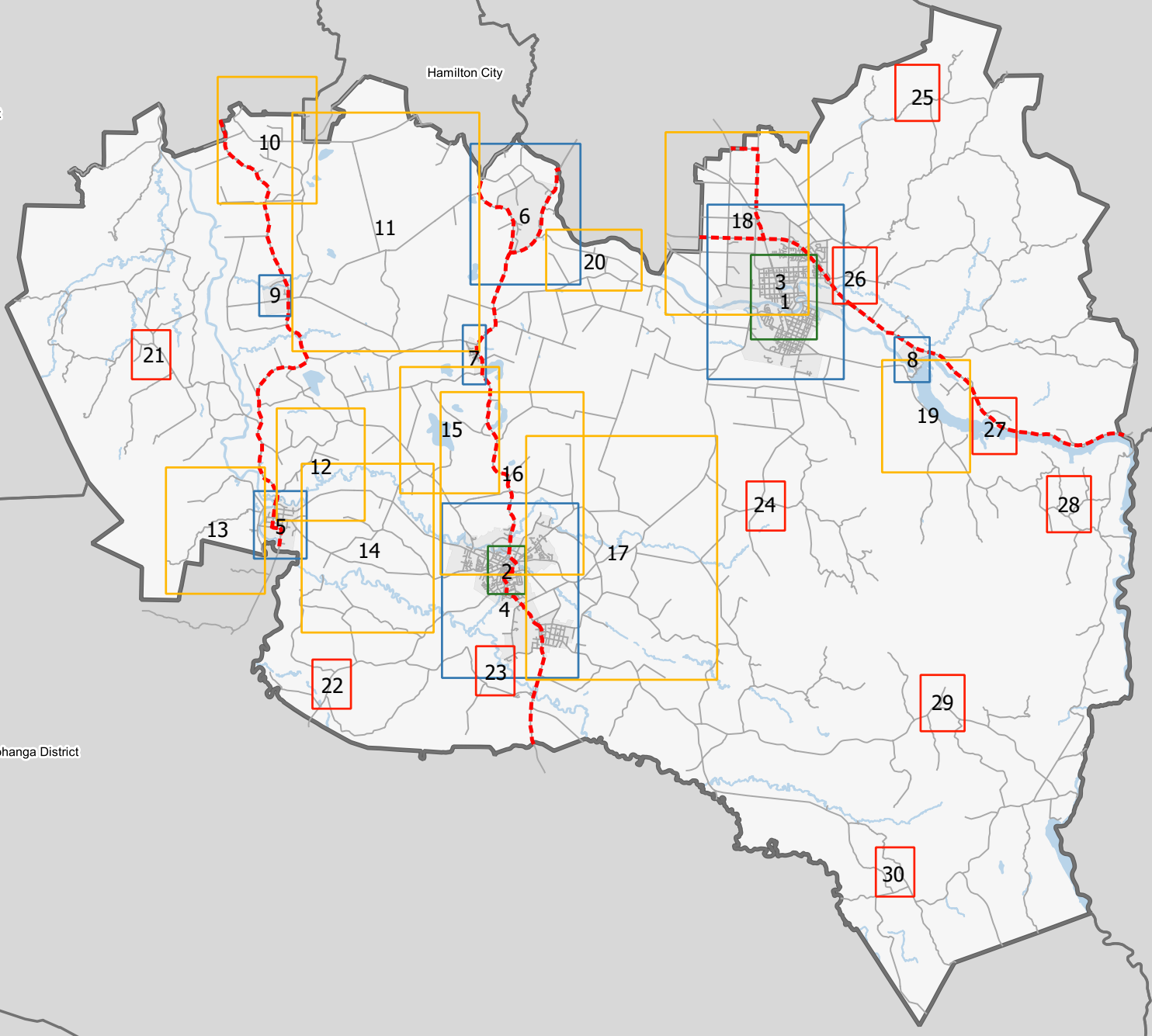
South Waikato District

**Speed Limit**

- State Highway
- Urban Traffic Area

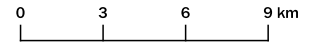
# WAIPA DISTRICT COUNCIL - SPEED LIMIT BYLAW 2019

## Overview Map



COPYRIGHT © WAIPA DISTRICT COUNCIL

CADASTRAL INFORMATION DERIVED FROM LAND INFORMATION NEW ZEALAND'S DIGITAL CORE RECORD SYSTEM (CRS).



1:275,000 @ A4



**Speed Limit**

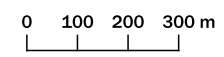
- 40km/h
- - - State Highway
- Urban Traffic Area

# WAIPA DISTRICT COUNCIL - SPEED LIMIT BYLAW 2019

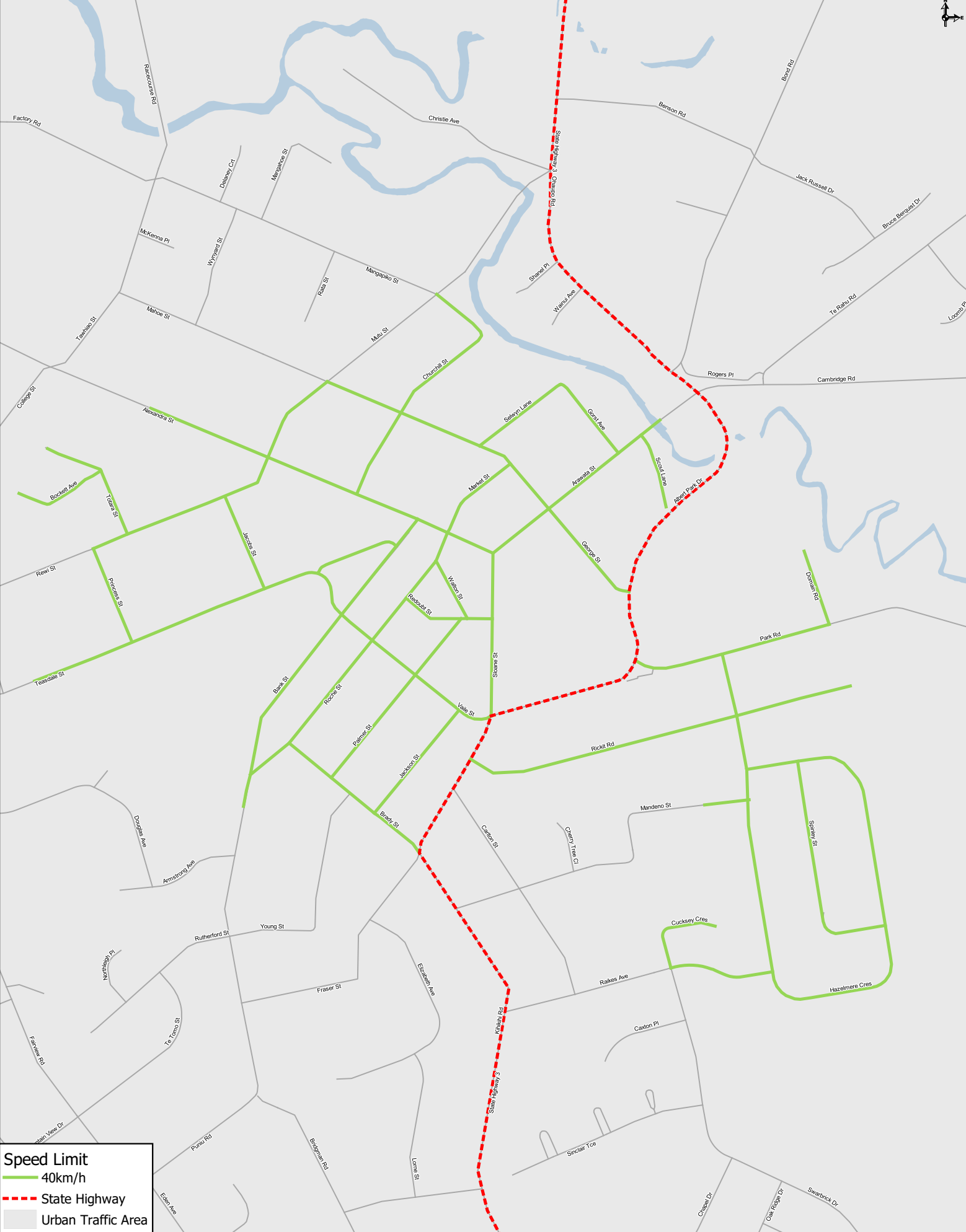
Cambridge 40km/h Speed



COPYRIGHT © WAIPA DISTRICT COUNCIL  
 CADASTRAL INFORMATION DERIVED FROM LAND INFORMATION NEW ZEALAND'S DIGITAL CORE RECORD SYSTEM (CRS).  
 CROWN COPYRIGHT RESERVED.







**Speed Limit**

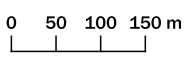
- 40km/h
- - - State Highway
- Urban Traffic Area

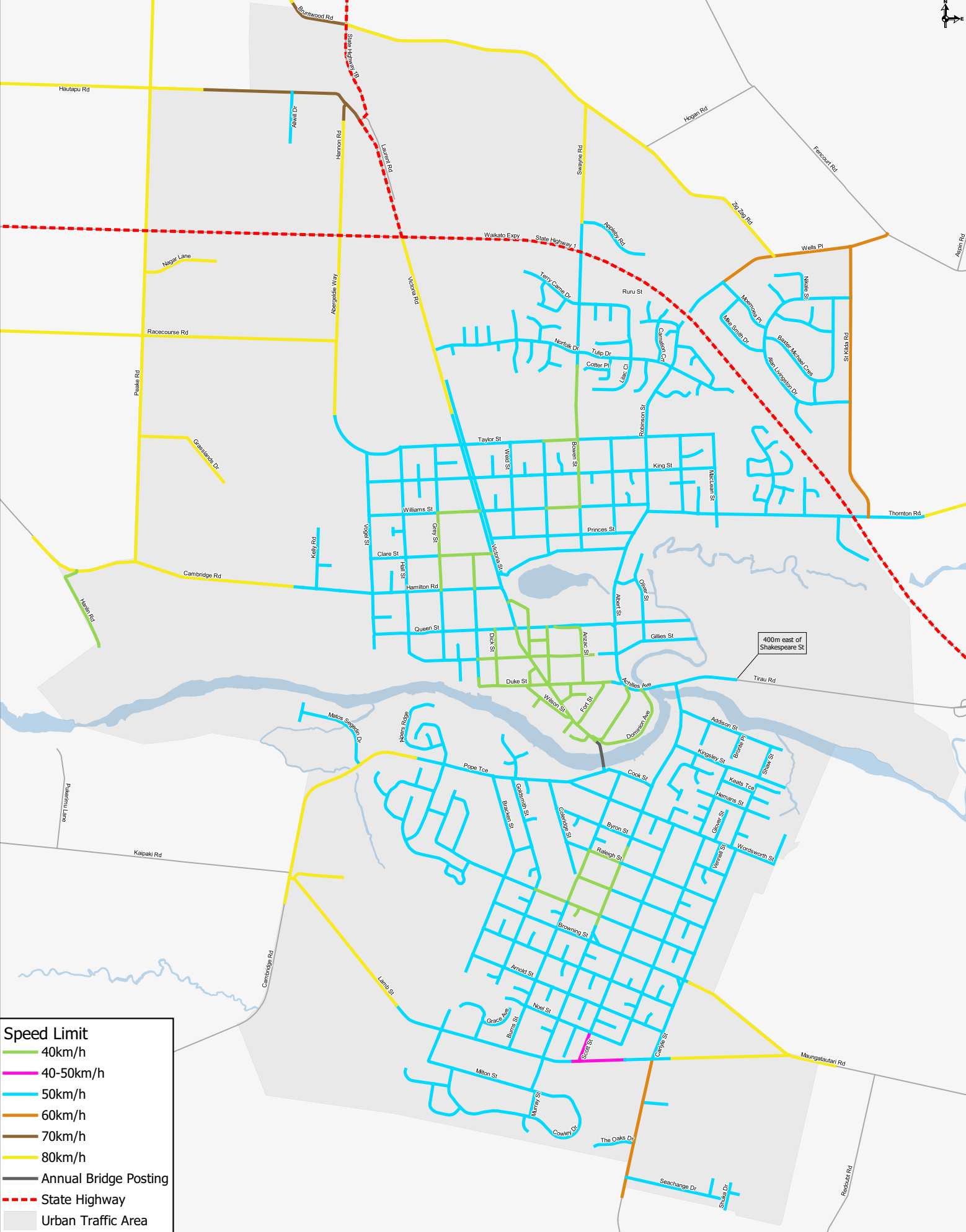
# WAIPA DISTRICT COUNCIL - SPEED LIMIT BYLAW 2019

Te Awamutu 40km/h Speed



COPYRIGHT © WAIPA DISTRICT COUNCIL  
 CADASTRAL INFORMATION DERIVED FROM LAND INFORMATION NEW ZEALAND'S DIGITAL CORE RECORD SYSTEM (CRS).  
 CROWN COPYRIGHT RESERVED.





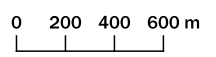
- Speed Limit**
- 40km/h
  - 40-50km/h
  - 50km/h
  - 60km/h
  - 70km/h
  - 80km/h
  - Annual Bridge Posting
  - - - State Highway
  - Urban Traffic Area

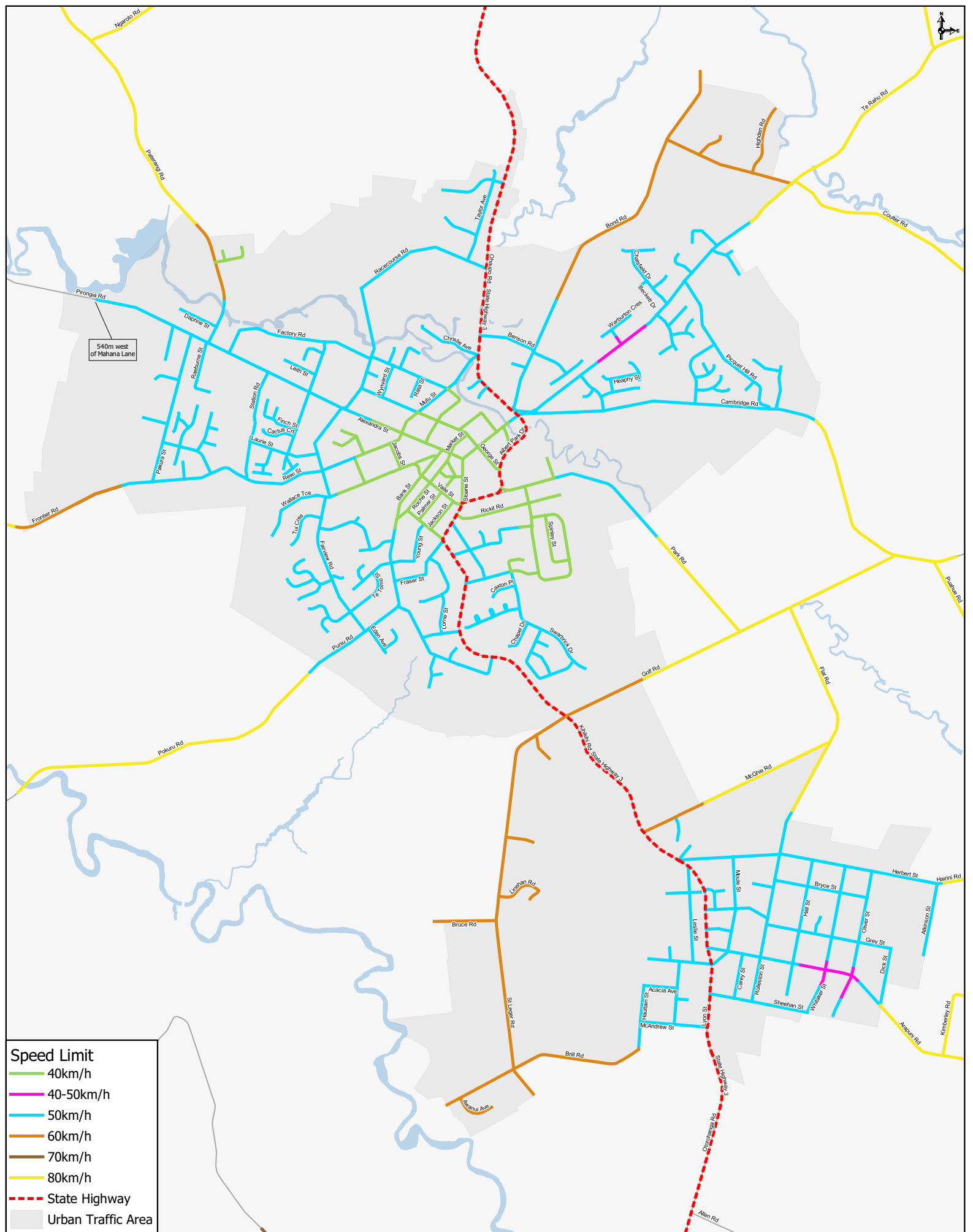
# WAIPA DISTRICT COUNCIL - SPEED LIMIT BYLAW 2019

Cambridge Urban Traffic Area



COPYRIGHT © WAIPA DISTRICT COUNCIL  
 CADASTRAL INFORMATION DERIVED FROM LAND INFORMATION NEW ZEALAND'S DIGITAL CORE RECORD SYSTEM (CRS).  
 CROWN COPYRIGHT RESERVED.





**Speed Limit**

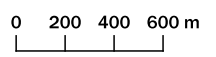
- 40km/h
- 40-50km/h
- 50km/h
- 60km/h
- 70km/h
- 80km/h
- State Highway
- Urban Traffic Area

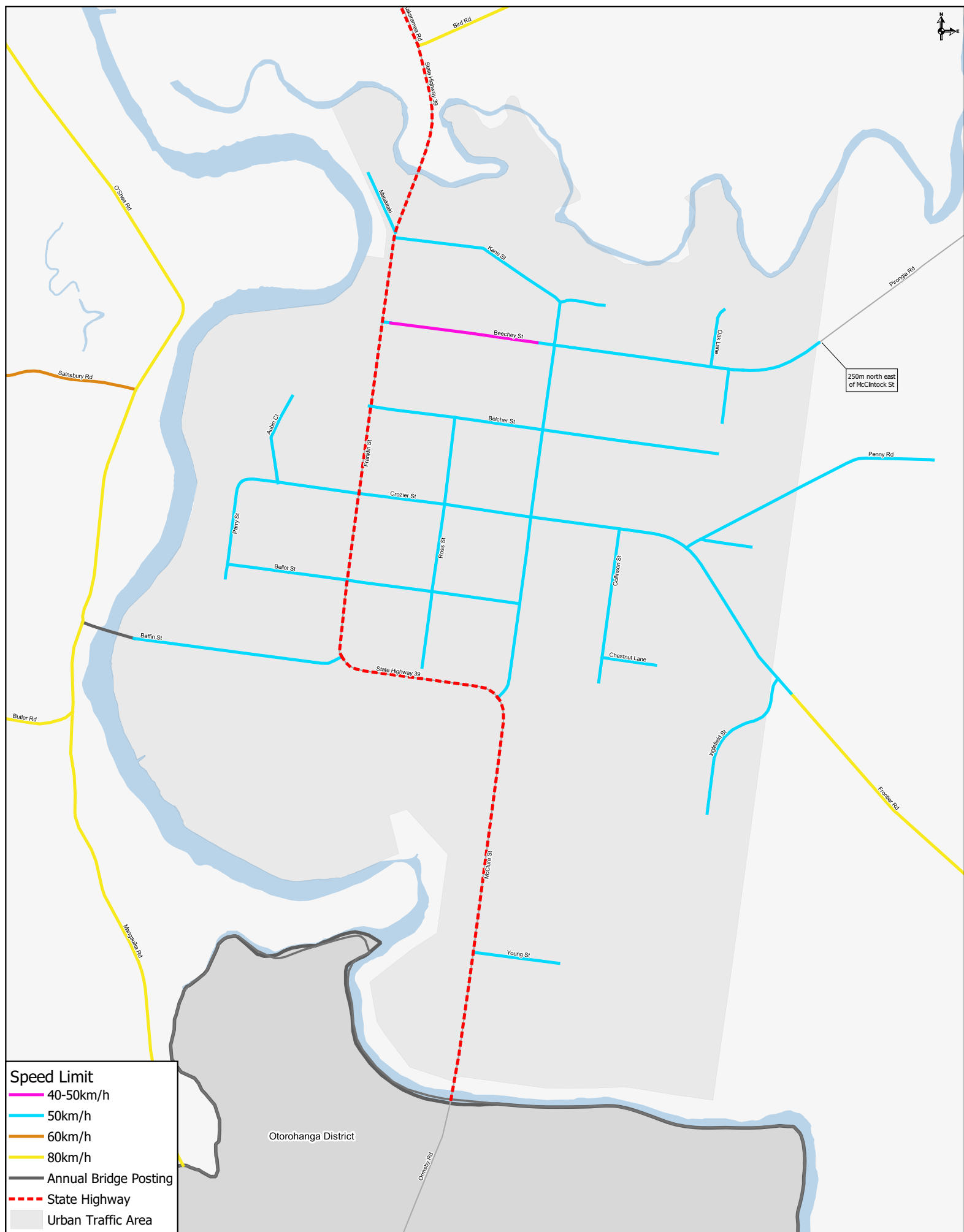
# WAIPA DISTRICT COUNCIL - SPEED LIMIT BYLAW 2019

Te Awamutu and Kihikihi Urban Traffic Area



COPYRIGHT © WAIPA DISTRICT COUNCIL  
 CADASTRAL INFORMATION DERIVED FROM LAND INFORMATION NEW ZEALAND'S DIGITAL CORE RECORD SYSTEM (CRS).  
 CROWN COPYRIGHT RESERVED.





- Speed Limit**
- 40-50km/h
  - 50km/h
  - 60km/h
  - 80km/h
  - Annual Bridge Posting
  - - - State Highway
  - Urban Traffic Area

# WAIPA DISTRICT COUNCIL - SPEED LIMIT BYLAW 2019

Pirongia Urban Traffic Area



5

COPYRIGHT © WAIPA DISTRICT COUNCIL

CADASTRAL INFORMATION DERIVED FROM LAND INFORMATION NEW ZEALAND'S DIGITAL CORE RECORD SYSTEM (CRS). CROWN COPYRIGHT RESERVED.

0 100 200 300 m

1:12,000 @ A4



Hamilton City

Waikato District

**Speed Limit**

- 50km/h
- 60km/h
- 80km/h
- - - State Highway
- Urban Traffic Area

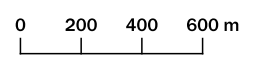
# WAIPA DISTRICT COUNCIL - SPEED LIMIT BYLAW 2019

## Rukuhia Urban Traffic Area

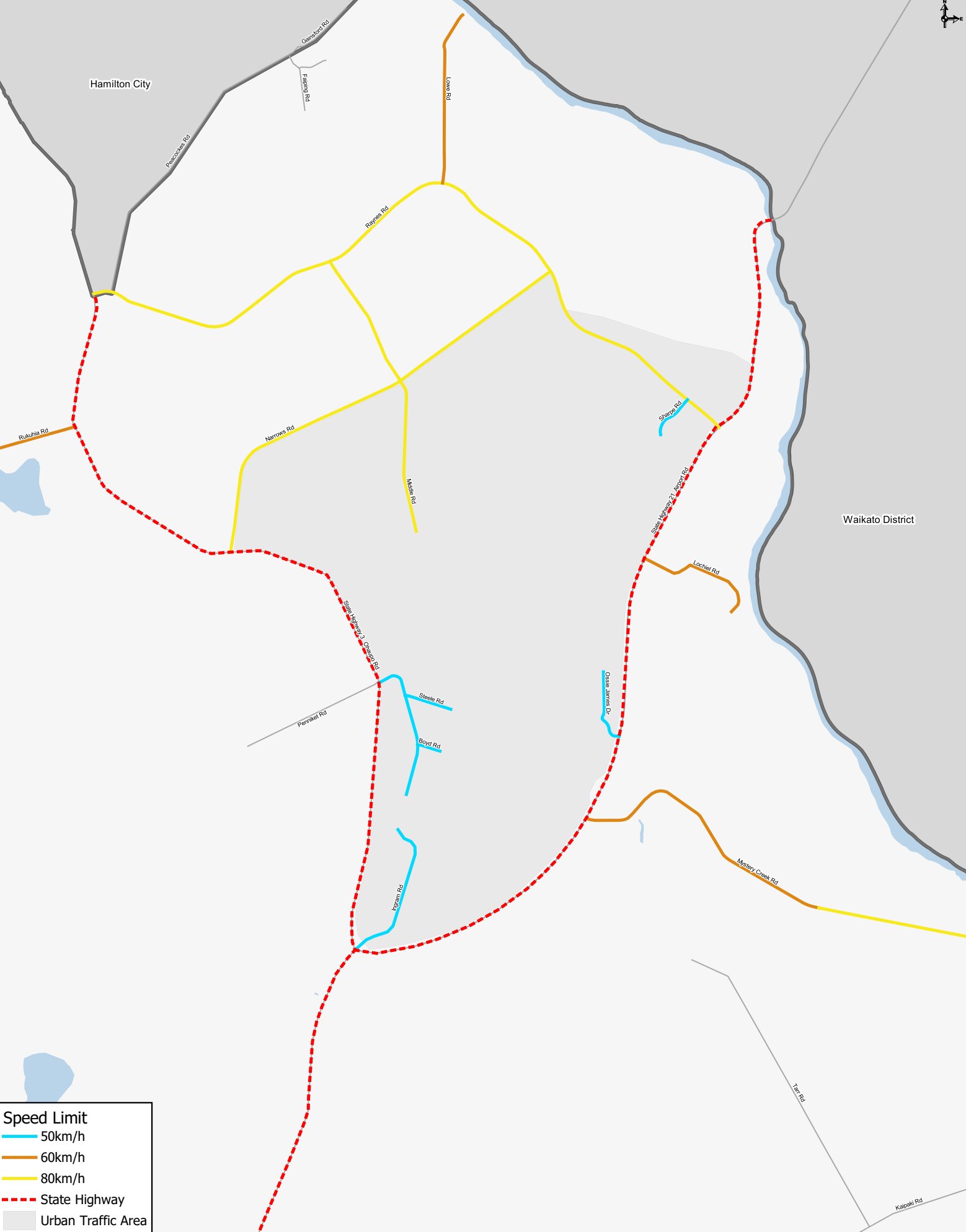


COPYRIGHT © WAIPA DISTRICT COUNCIL  
 CADASTRAL INFORMATION DERIVED FROM LAND INFORMATION NEW ZEALAND'S DIGITAL CORE RECORD SYSTEM (CRS).  
 CROWN COPYRIGHT RESERVED.

6



1:25,000 @ A4



Ohaupo - 7

Karapiro - 8

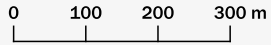


100m west of Sandes St



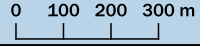
**Speed Limit**

- 50km/h
- 80km/h
- - - State Highway
- Urban Traffic Area

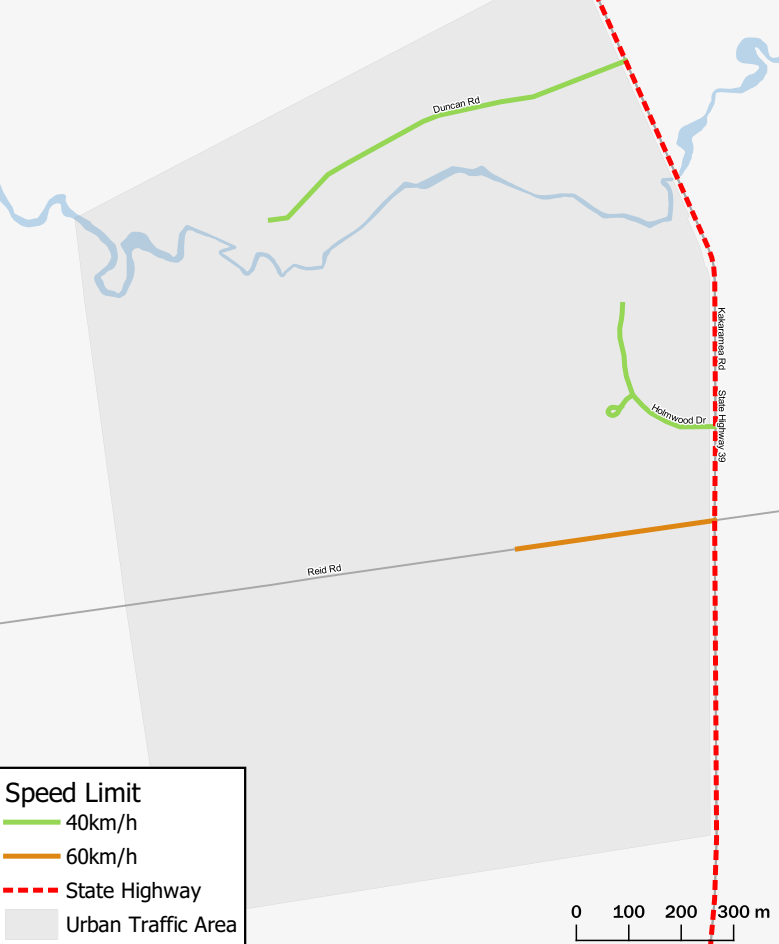


**Speed Limit**

- 20km/h
- 50km/h
- 60km/h
- - - State Highway
- Urban Traffic Area

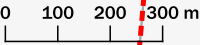


Ngahinapouri - 9



**Speed Limit**

- 40km/h
- 60km/h
- - - State Highway
- Urban Traffic Area



**WAIPA DISTRICT COUNCIL - SPEED LIMIT BYLAW 2019**

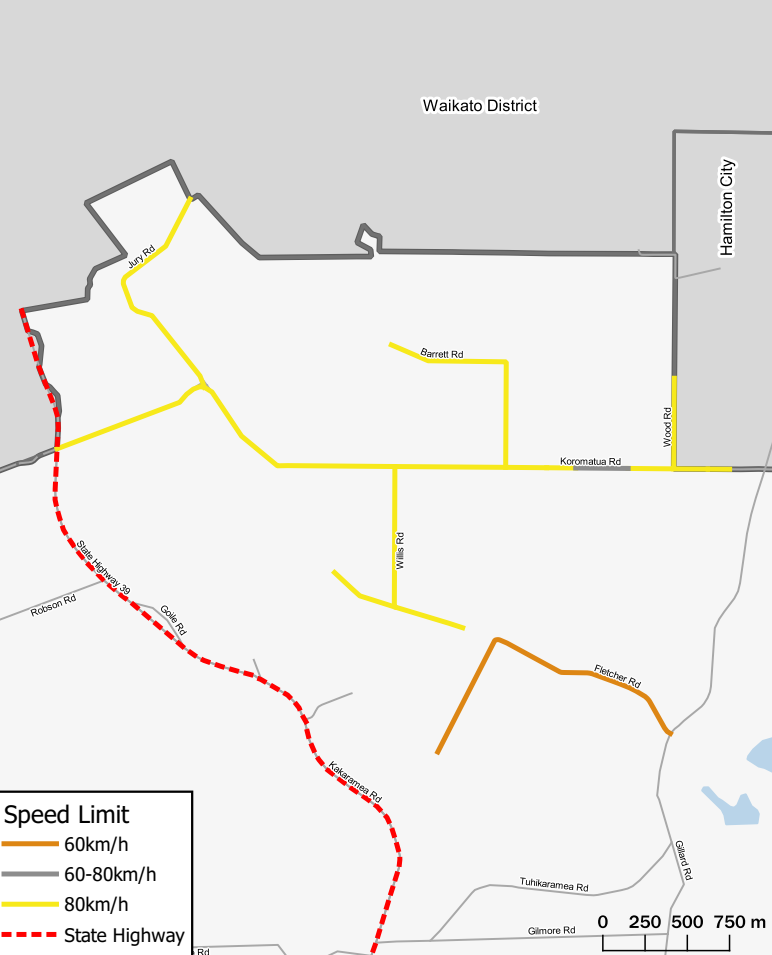
Ohaupo, Karapiro, and Ngahinapouri Urban Traffic Area



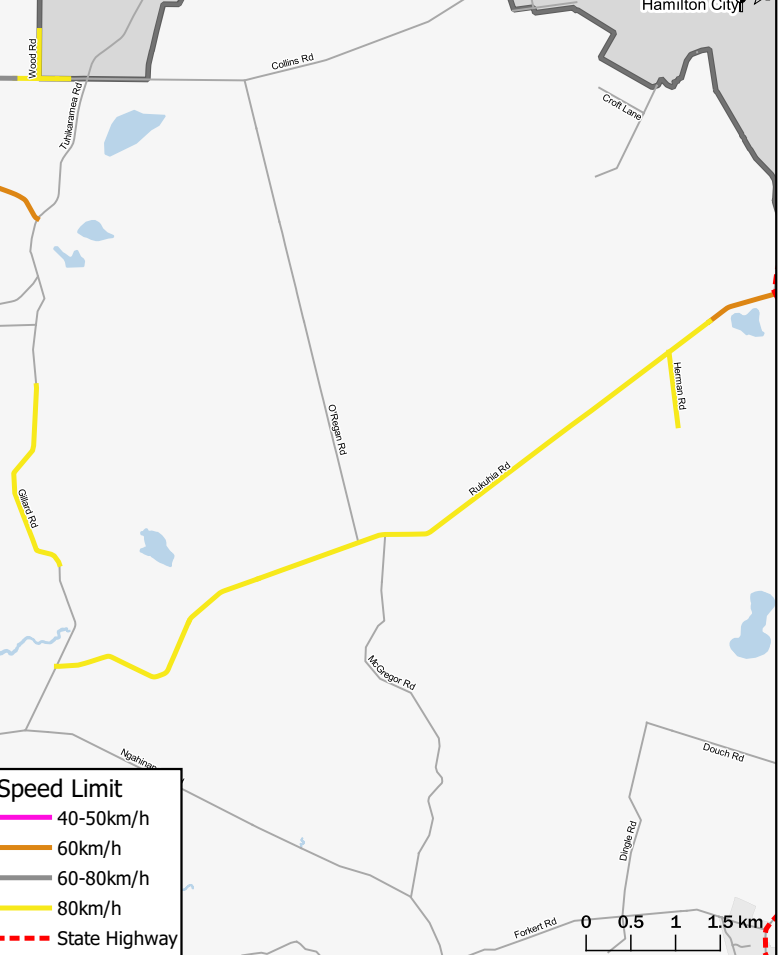
7-9

COPYRIGHT © WAIPA DISTRICT COUNCIL  
CADASTRAL INFORMATION DERIVED FROM LAND INFORMATION NEW ZEALAND'S DIGITAL CORE RECORD SYSTEM (CRS).  
CROWN COPYRIGHT RESERVED.

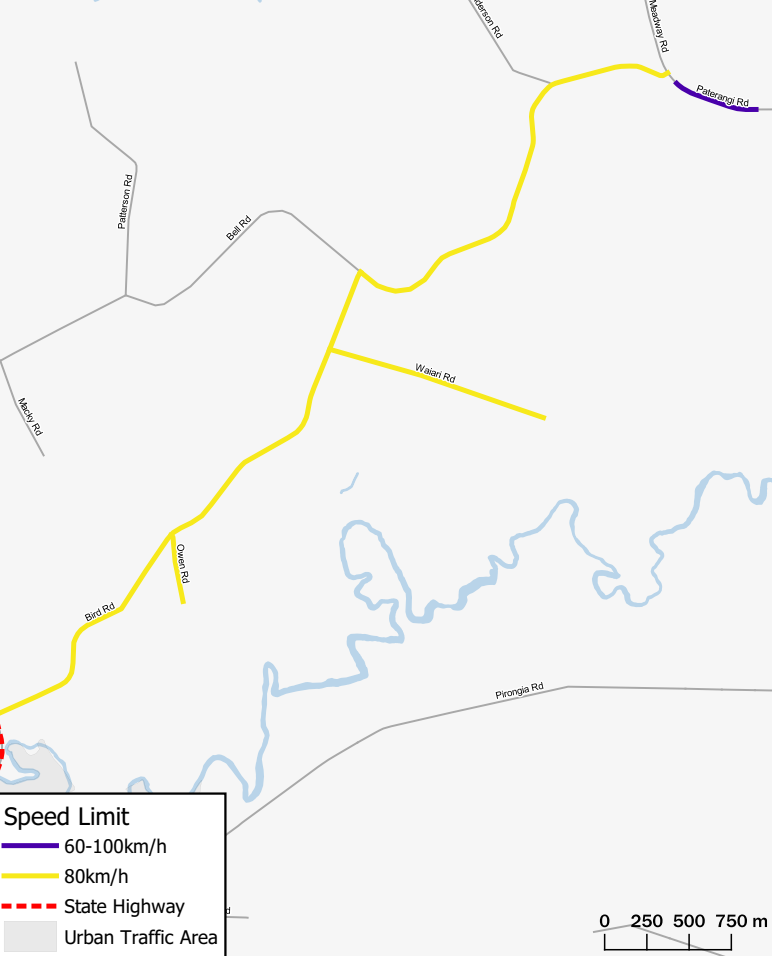
Koromatua - 10



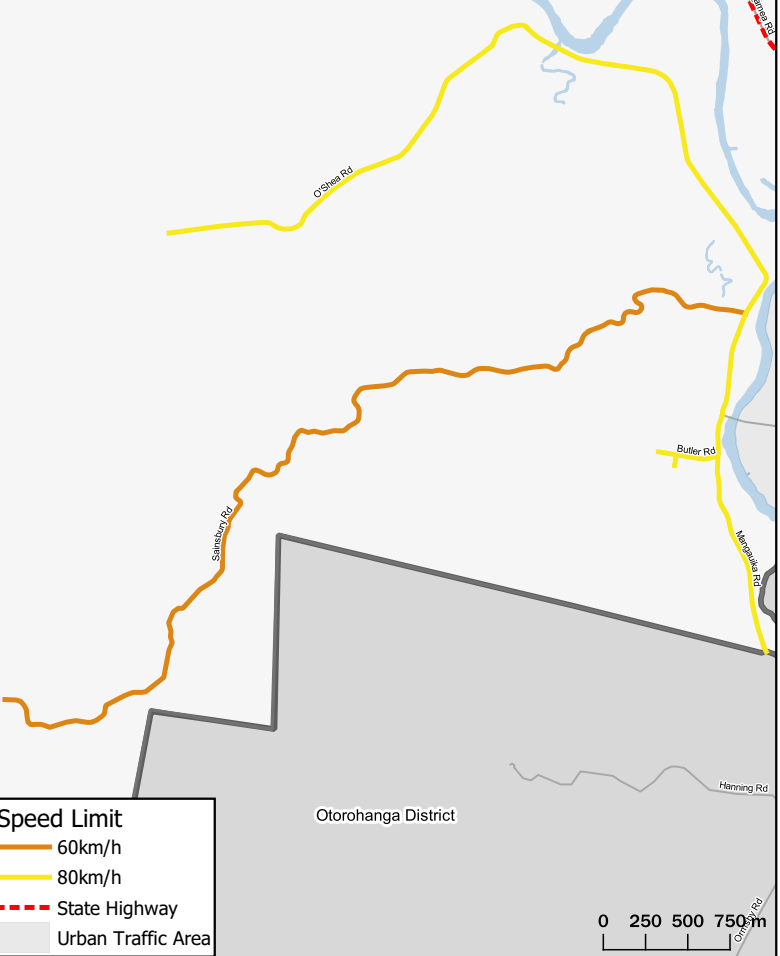
West of Rukuhia - 11



North of Pirongia - 12



West of Pirongia - 13



WAIPA DISTRICT COUNCIL - SPEED LIMIT BYLAW 2019

Rural Area



10-13

COPYRIGHT © WAIPA DISTRICT COUNCIL  
 CADASTRAL INFORMATION DERIVED FROM LAND  
 INFORMATION NEW ZEALAND'S DIGITAL CORE  
 RECORD SYSTEM (CRS).  
 CROWN COPYRIGHT RESERVED.

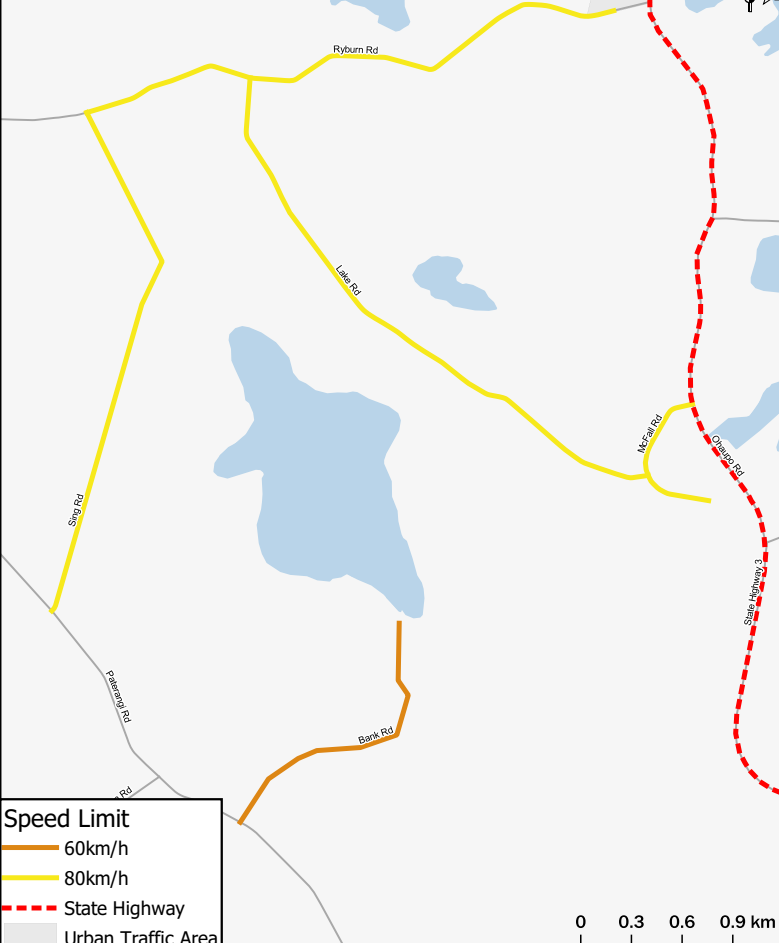
West of Te Awamutu - 14



**Speed Limit**

- 60km/h
- 80km/h

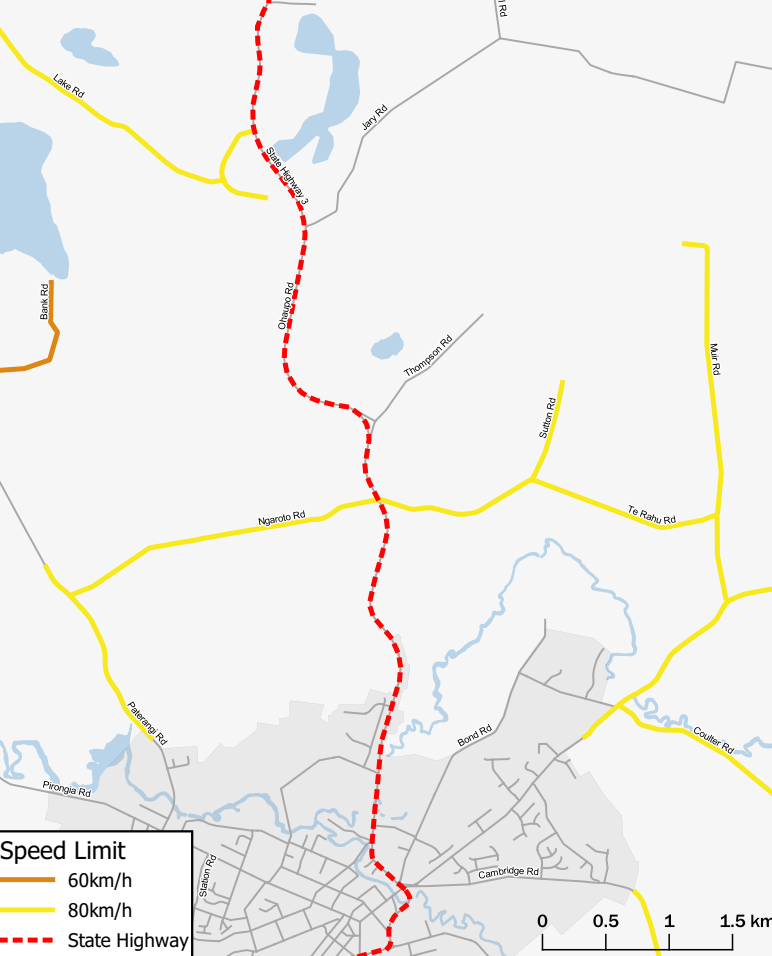
South of Ohaupo - 15



**Speed Limit**

- 60km/h
- 80km/h
- State Highway
- Urban Traffic Area

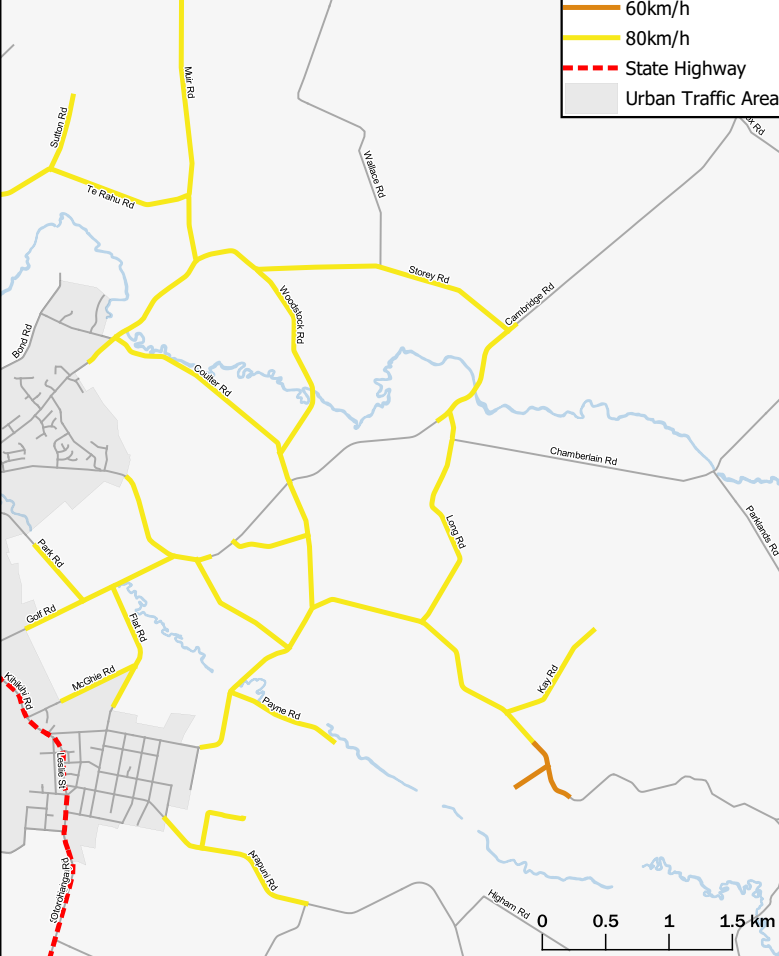
North of Te Awamutu - 16



**Speed Limit**

- 60km/h
- 80km/h
- State Highway

East of Te Awamutu - 17



**Speed Limit**

- 60km/h
- 80km/h
- State Highway
- Urban Traffic Area

**WAIPA DISTRICT COUNCIL - SPEED LIMIT BYLAW 2019**

Rural Area



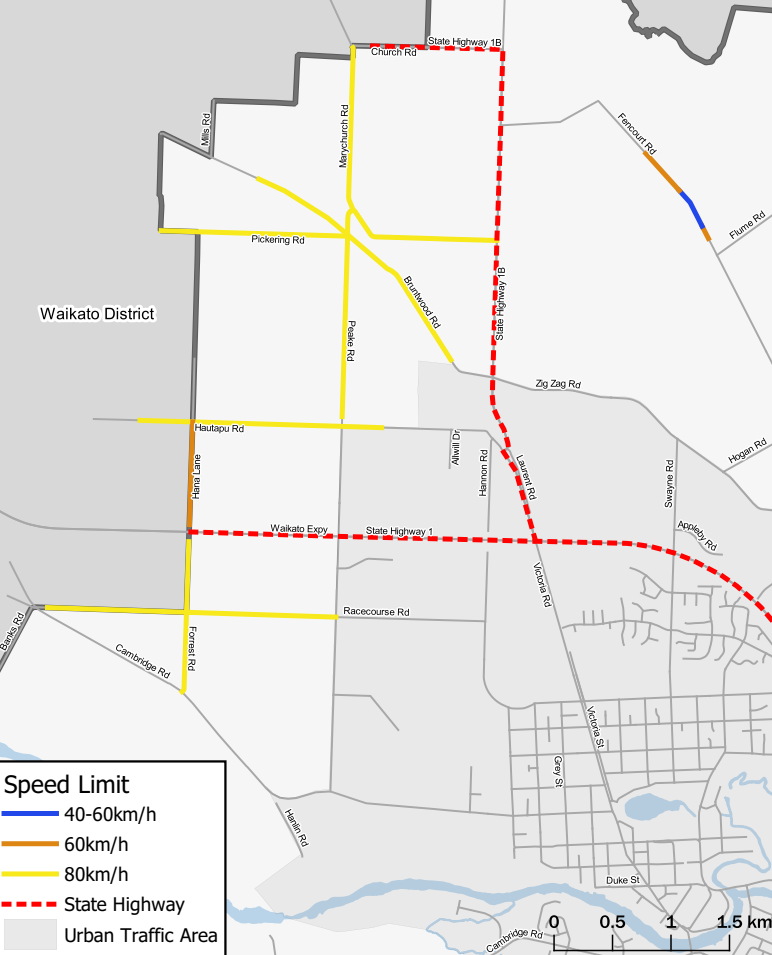
14-17

COPYRIGHT © WAIPA DISTRICT COUNCIL  
 CADASTRAL INFORMATION DERIVED FROM LAND  
 INFORMATION NEW ZEALAND'S DIGITAL CORE  
 RECORD SYSTEM (CRS).  
 CROWN COPYRIGHT RESERVED.



North west of Cambridge - 18

South of Karapiro - 19



South east of Rukuhia - 20



**WAIPA DISTRICT COUNCIL - SPEED LIMIT BYLAW 2019**

Rural Area



18-20

COPYRIGHT © WAIPA DISTRICT COUNCIL  
 CADASTRAL INFORMATION DERIVED FROM LAND  
 INFORMATION NEW ZEALAND'S DIGITAL CORE  
 RECORD SYSTEM (CRS).  
 CROWN COPYRIGHT RESERVED.



Te Pahu - 21

Pokuru - 22

Roto-O-Rangi - 24

Tokenui - 23

Te Miro - 25

Speed Limit  
60km/h

Speed Limit  
60-100km/h

Speed Limit  
60km/h  
80km/h

Speed Limit  
70km/h

Speed Limit  
60km/h

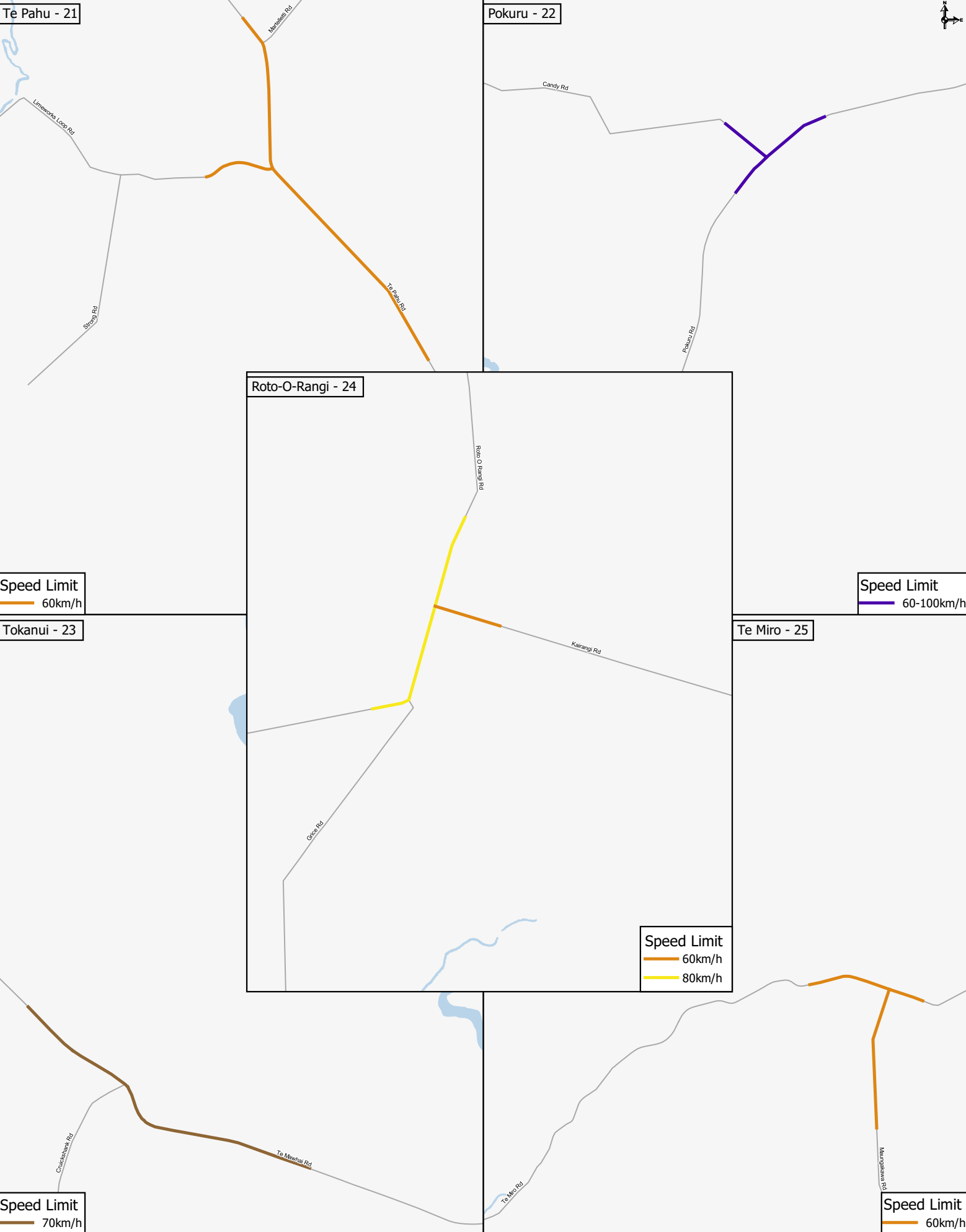
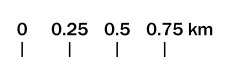
# WAIPA DISTRICT COUNCIL - SPEED LIMIT BYLAW 2019

Rural Area



## 21-25

COPYRIGHT © WAIPA DISTRICT COUNCIL  
CADASTRAL INFORMATION DERIVED FROM LAND  
INFORMATION NEW ZEALAND'S DIGITAL CORE  
RECORD SYSTEM (CRS).  
CROWN COPYRIGHT RESERVED.





East of Cambridge - 26

East of Karapiro - 27

Pukeatua - 29

Horahora - 28

Wharapapa South - 30

**Speed Limit**

- 50km/h
- 60km/h
- 80km/h
- State Highway

**Speed Limit**

- 60km/h
- State Highway

**Speed Limit**

- 60km/h

**Speed Limit**

- 60km/h

**Speed Limit**

- 60km/h

# WAIPA DISTRICT COUNCIL - SPEED LIMIT BYLAW 2019

Rural Area



## 26-30

COPYRIGHT © WAIPA DISTRICT COUNCIL  
 CADASTRAL INFORMATION DERIVED FROM LAND  
 INFORMATION NEW ZEALAND'S DIGITAL CORE  
 RECORD SYSTEM (CRS).  
 CROWN COPYRIGHT RESERVED.

