

(AFC)

ibnmnlpcajpcqglefndmkaj/https://www.futureproof.org.nz/assets/FutureProof/Documents/14-southern-growth-corridor-sip-october-2015-final.pdf

sk Viewer | F...

14-southern-growth-corridor-sip-october...

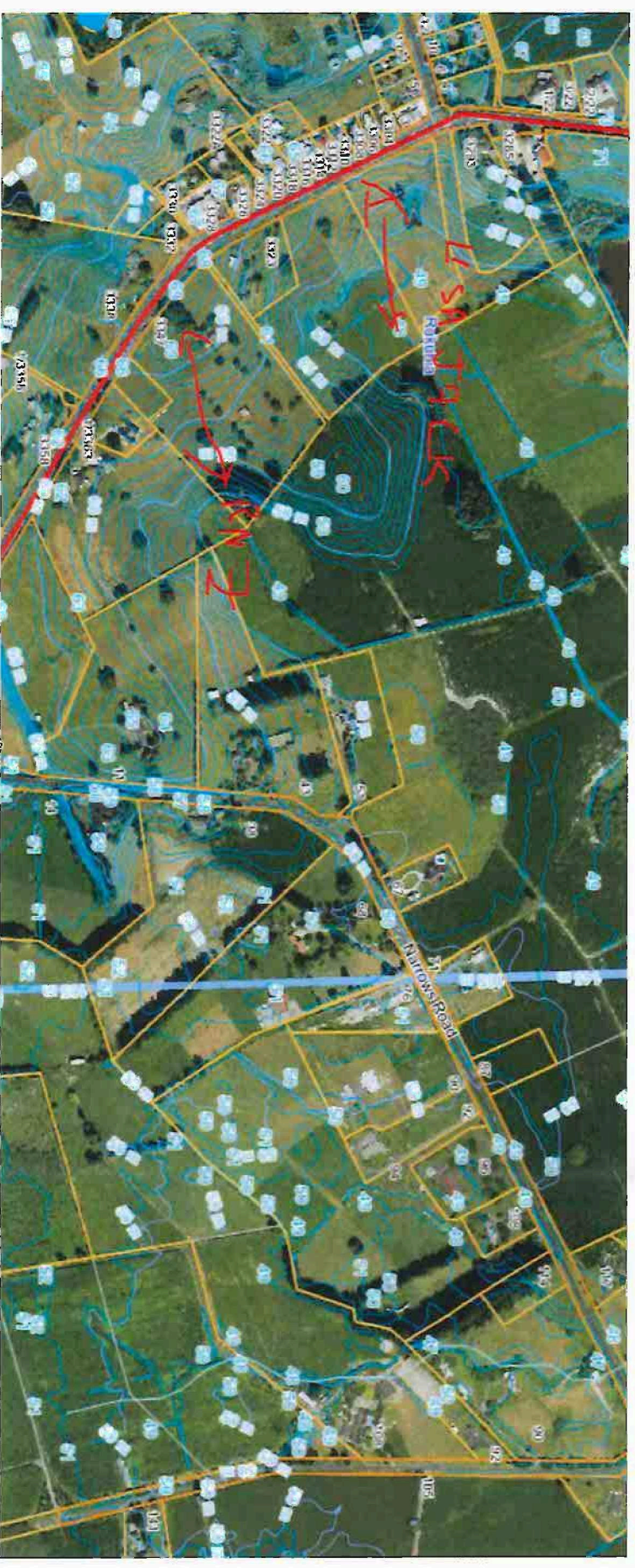
**Rukuhia**  
**Key challenge:** no challenges have been identified. **Key findings:** remain un-serviced unless opportunities exist to connect as a result of upgrades to larger nearby developments that enable ready connection at the discretion of the Councils.

**Rural Environment**  
**Key challenge:** increasing pressures for non-rural land uses. **Key findings:** uphold the Proposed Waipa District Plan policies which protect the Rural Zone from non-rural uses, including Large Lot or Urban

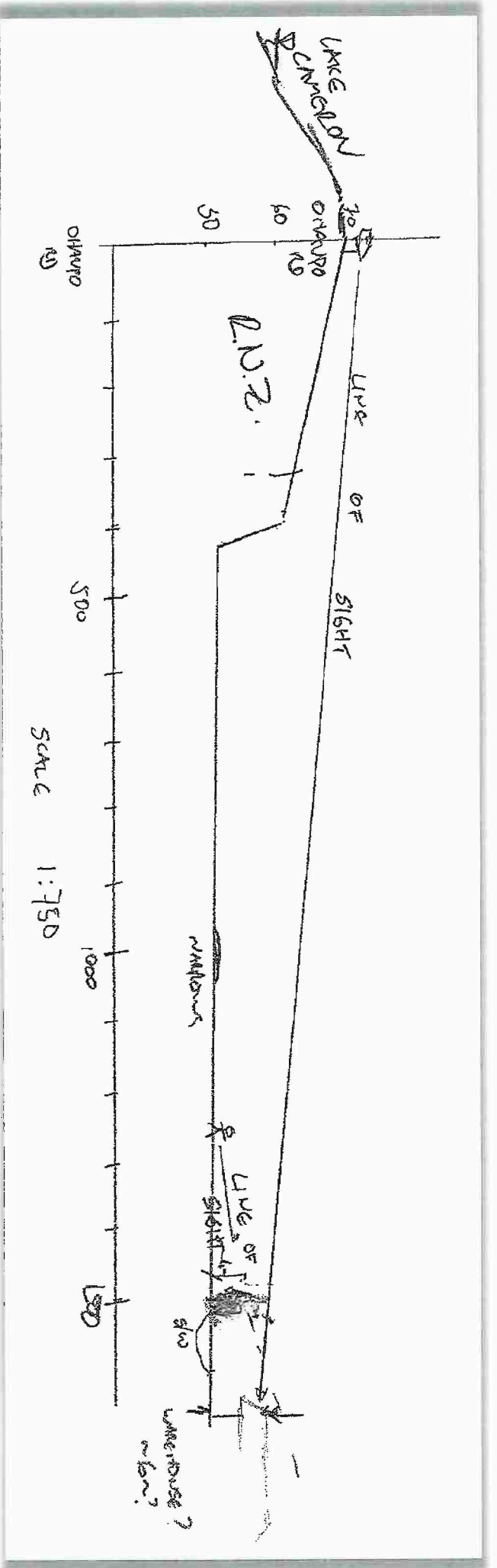
caia rihahidirea Confining to monitor rural residential and rural development

Q 0 E J

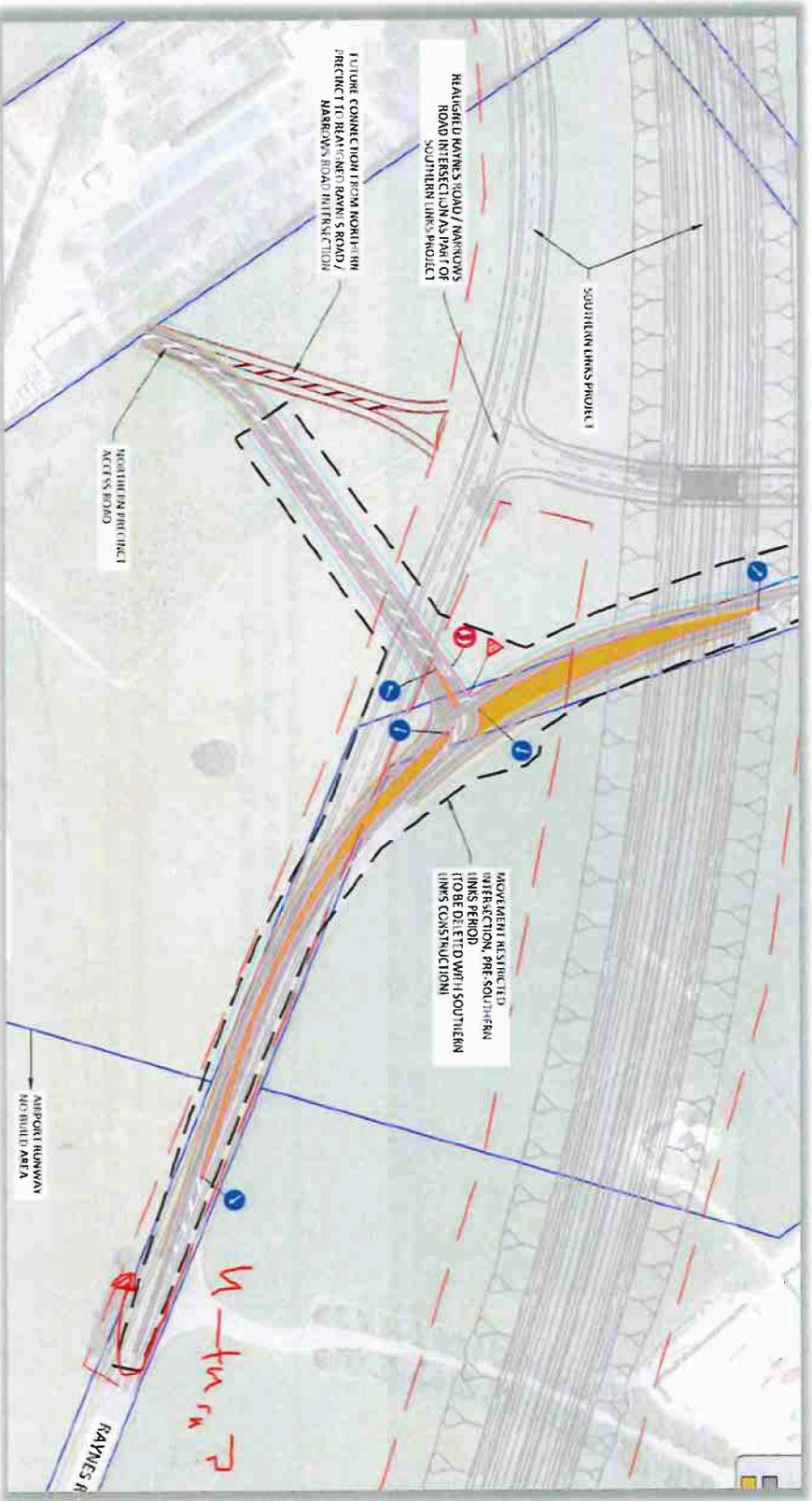
Excerpt from Southern Growth Corridor



Plan showing topography and Lisa Jack Assessment of RNZ View Shaft



Layman's Section view to identify Sight Corridor



Raynes Intersection Detail -

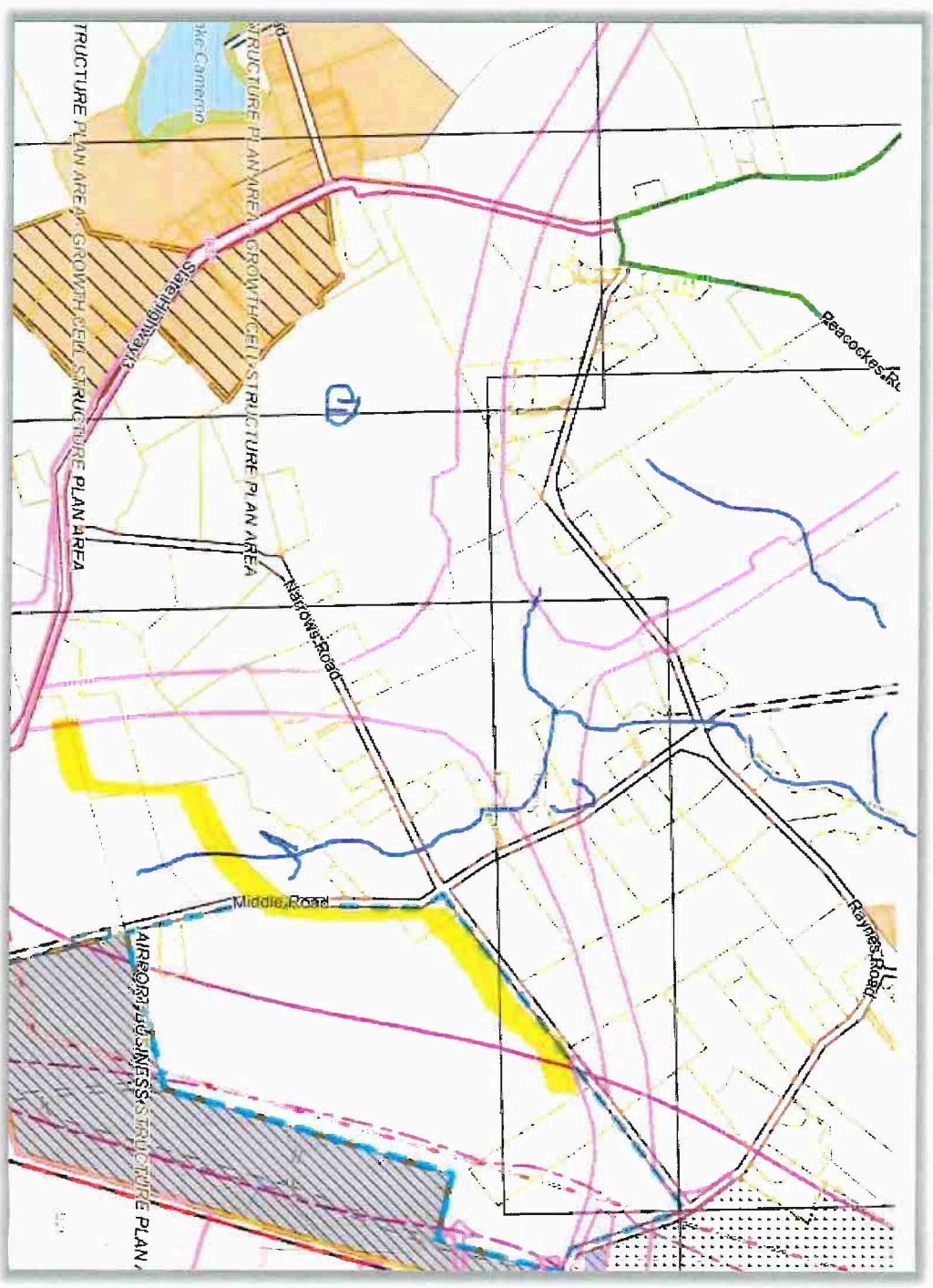
**3.2 Integrated Three Waters Management**

Best practice three waters management is to develop an integrated catchment management approach. The Airport Northern Precinct is a large portion of the local catchment for stormwater in particular. Development of a more integrated approach with a guiding document such as a catchment management plan (CMP) for 3 waters would provide better integration with WDC, surrounding land owners and Waka Kotahi. Waipa District Council (WDC) have a programme to develop CMPs for the main urban areas and urban growth cells.

CMPs allow identification of effective public and private water sensitive techniques for catchments and site specific development. CMPs are important when dealing with large scale land use changes or intensification of land uses with the potential to negatively impact on infrastructure capacity and the receiving environment. They are particularly effective when there are a number of parties involved and allow consideration at a larger scale of climate change impacts and environmental enhancements consistent with Te Ture Whai mana.

Future requirements of the new wastewater entity being set up to manage three waters in the wider region are still unknown but will be developed by July 2024 (refer Water Services Entity Act 2022).

Best Practice Comment on SW Management – From Beca



GIS overlay – Nukuha Stream and Affect of Works