

Copyright © Waipā District Council. Coastal information derived from Land Information New Zealand's Digital Core Record System (DCRS).
 Please note that the boundaries of the qualifying matters are indicative only and should not be used for legal or administrative purposes.

- Qualifying Matter - River/Gully Proximity
- Qualifying Matter - Stormwater Constraint
- Qualifying Matter - Infrastructure Constraint

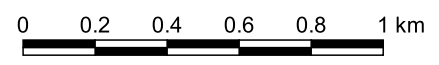
Qualifying Matters - Cambridge

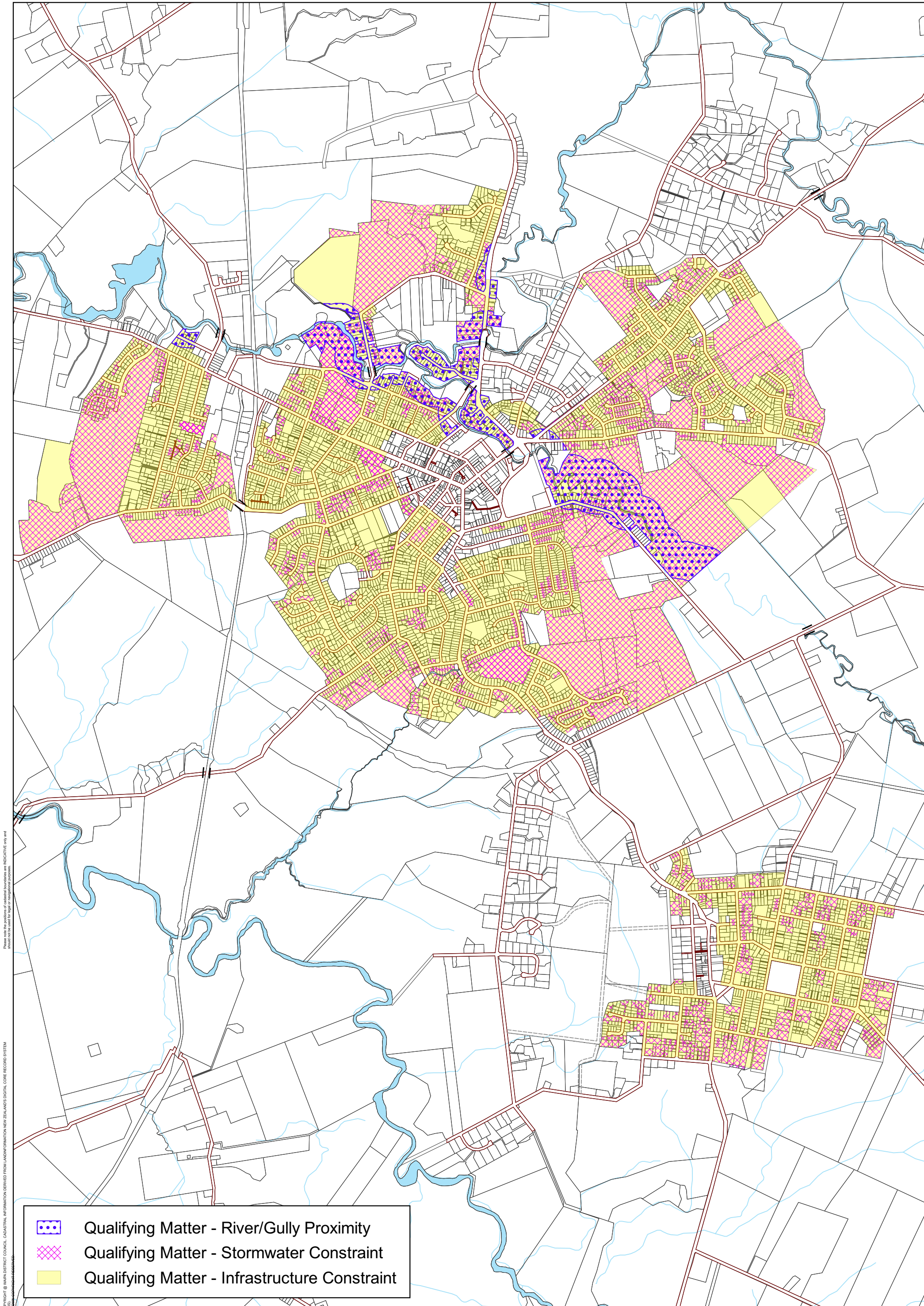
Map 56

Waipā District Plan

As Proposed by Plan Change 26

Scale: 1 : 20,000 at A3





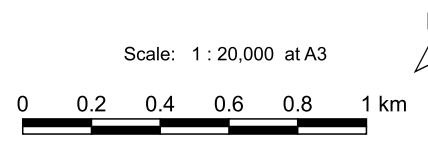
Copyright © Waipā District Council. CAUSTRAL INFORMATION DERIVED FROM LAND INFORMATION NEW ZEALAND'S DIGITAL CORE RECORD SYSTEM (DCRS).
 Please note that boundaries and other information are indicative only and should not be used for legal or financial purposes.

	Qualifying Matter - River/Gully Proximity
	Qualifying Matter - Stormwater Constraint
	Qualifying Matter - Infrastructure Constraint

Map 57

Qualifying Matters - Te Awamutu/Kihikihi

Waipā District Plan
As Proposed by Plan Change 26





- Character Cluster
- Character Street

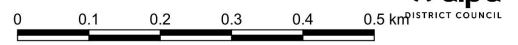
Map 58A

Character Clusters - Cambridge

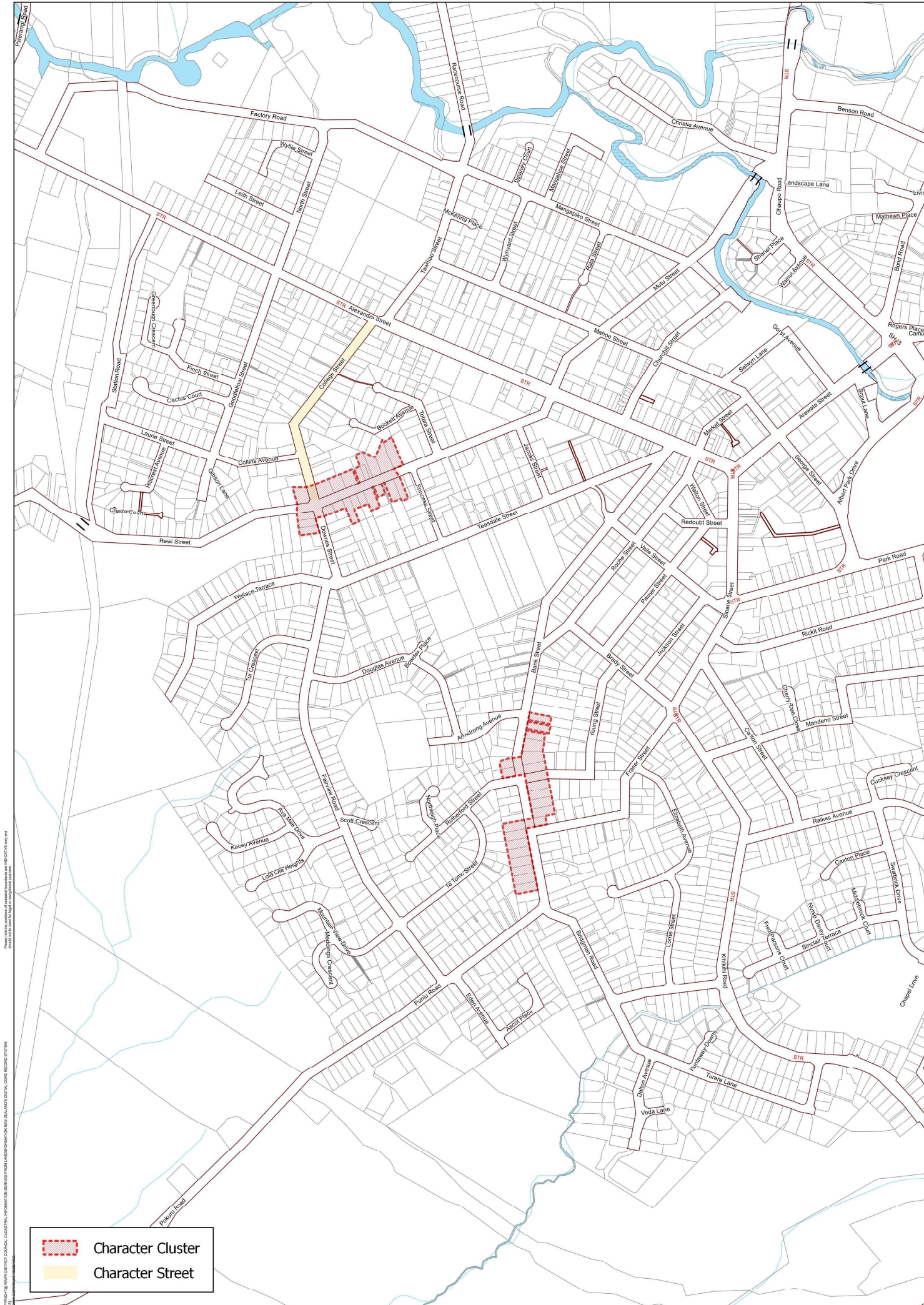
Waipa District Plan

As Proposed by Plan Change 26

Scale: 1 : 7,500 at A3





Copyright © Waipā District Council. All rights reserved. Information derived from LAND INFORMATION NEW ZEALAND'S DIGITAL CORE RECORDS SYSTEM.



Character Cluster
 Character Street

Map 59A

Character Clusters - Te Awamutu
 Waipa District Plan
 As Proposed by Plan Change 26

Scale: 1 : 7,500 at A3





Copyright © Waipa District Council. Cartographic information derived from LAND INFORMATION NEW ZEALAND'S DIGITAL CORE RECORDS SYSTEM.



Copyright © Waipā District Council. CARTOGRAPHIC INFORMATION DERIVED FROM LAND INFORMATION NEW ZEALAND'S DIGITAL CORE RECORDS SYSTEM.
 Approved for publication by the Waipā District Council on 10/10/2023.

- Character Cluster
- Character Street

Map 60A

Character Clusters - Kihikihi

Waipā District Plan

As Proposed by Plan Change 26

Scale: 1 : 7,500 at A3

