

DECISION REPORT ON PLAN
CHANGE 3 TO THE OPERATIVE
WAIPA DISTRICT PLAN:

CHANGE ZONING OF
RESIDENTIAL PROPERTIES
ALONG ATHLONE DRIVE AND
FOR THE TE PUNA ROIMATA
SITE

November 2017

Contents

Part 1 - Decision report	3
1.1 Introduction.....	3
1.2 Decisions and reasons	3
Part 2 - Appendices	4
2.1 Amendments to be made to the Waipa District Plan.....	4

PART 1 - DECISION REPORT

1.1 Introduction

- 1.1.1 This decision report contains Waipa District Council's ('the Council') decision under Clause 10 of the First Schedule of the Resource Management Act 1991 ('the Act') on Plan Change 3 to the Waipa District Plan.
- 1.1.2 Plan Change 3 was limited notified on 14 August 2017 and seeks to change the zoning of a section of Deferred Reserve Zone located between several properties on Athlone Drive and the Waikato Expressway to Large Lot Residential Zone in addition to rezoning the Te Puna Roimata Site from Deferred Reserve and Large Lot Residential Zone to Reserve Zone.
- 1.1.3 The change proposed as a result of the plan change is illustrated in Appendix 1.

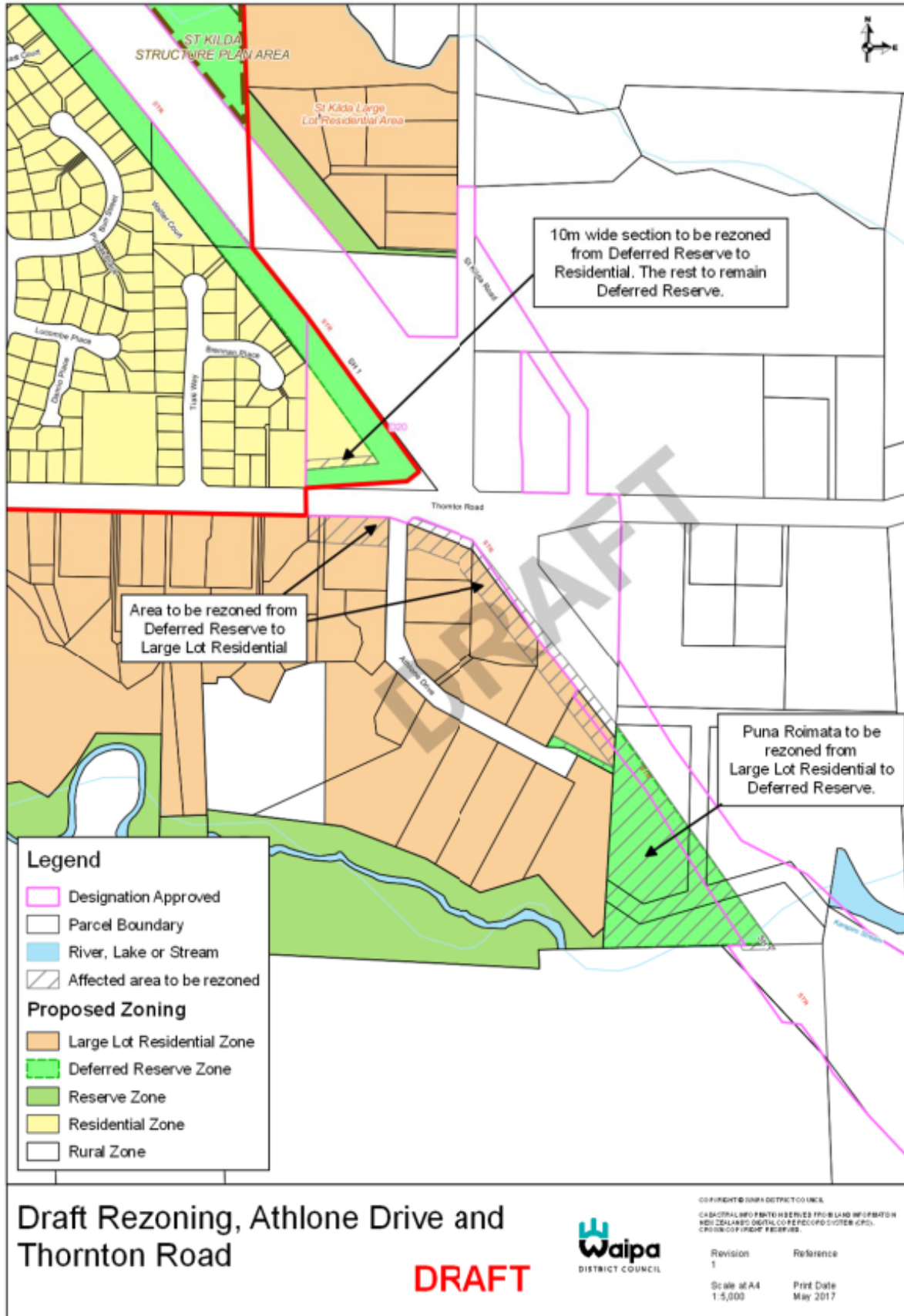
1.2 Decisions and reasons

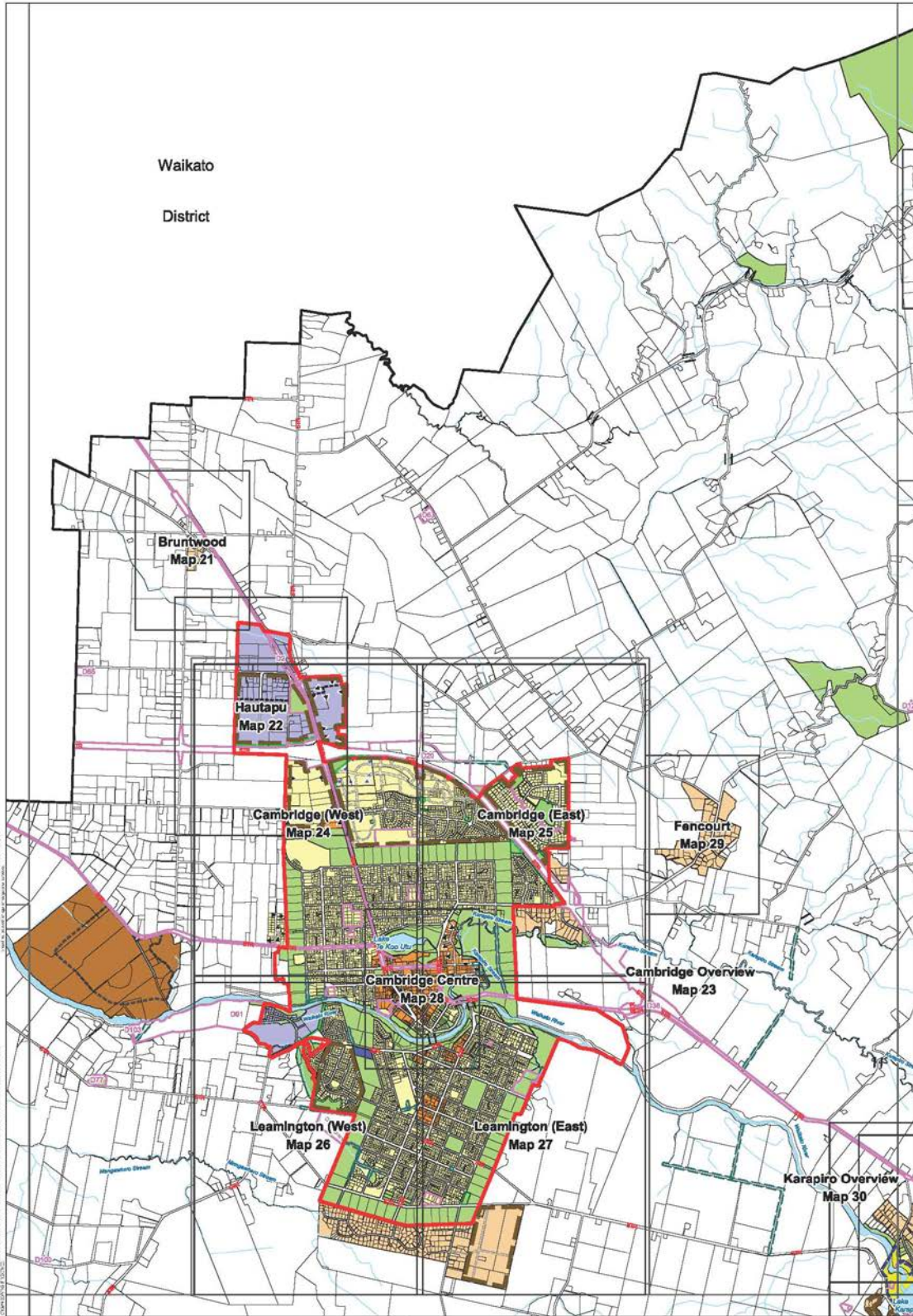
- 1.2.1 Council considered Plan Change 3 and noted that two submissions were received in support which were subsequently withdrawn. Council notes that the amendments proposed in Plan Change 3 are generally small changes to the District Plan and do not constitute fundamental changes to the significance and functioning of the Plan but rather improve its intent.
- 1.2.2 This Plan Change was notified in accordance with the First Schedule of the Act. Council considers the District Plan as amended by Plan Change 3 is the most appropriate way of achieving the purpose of the Act.
- 1.2.3 In considering section 32AA of the Act, Council consider that there is no need to alter the original evaluation undertaken pursuant to section 32 as a result of this decision as no amendments have been made to the Plan Change as originally notified. Council re-affirms that the provisions proposed in Plan Change 3 are the most appropriate way to achieve the purpose of the Act.
- 1.2.4 The amendments to the District Plan, along with a clean copy of the revised maps, are shown in Appendix 1.

PART 2 - APPENDICES

2.1 Amendments to be made to the Waipa District Plan

- 2.1.1 Changes are required to the zone maps of the Waipa District Plan to reflect the changes in zoning:
- (a) The first map identifies the changes proposed as part of this Plan Change; and
 - (b) The following maps are clean copies of the revised maps to be included in the District Plan.





4 Zones



Cambridge Overview

Waipa District Plan
Page Version - 20 December 2017





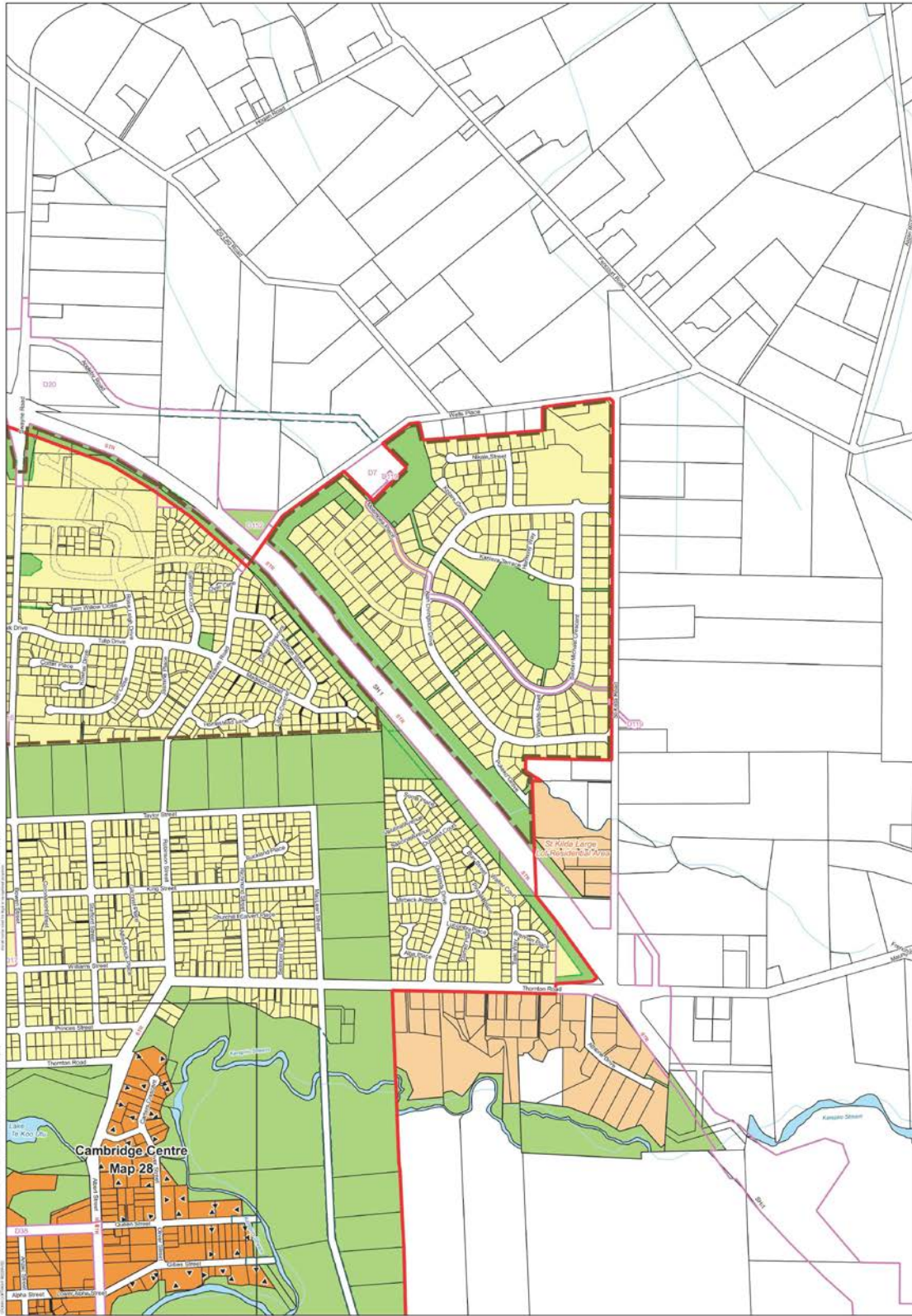
23 Zones



Cambridge Overview

Waipa District Plan
Page Version - 20 December 2017





25 Zones



Cambridge (East)
Waipā District Plan
Page Version - 20 December 2017

Scale: 1:10,000 at A3
0 0.1 0.2 0.3 0.4 0.5 km





TE AWAMUTU - HEAD OFFICE

101 Bank Street, Private Bag 2402, Te Awamutu Ph 07 872 0030

CAMBRIDGE - SERVICE CENTRE

23 Wilson Street, Cambridge Ph 07 823 3800

[f](#) /WaipaDistrictCouncil [@](#) /Waipa_NZ [t](#) /Waipa_DC
