



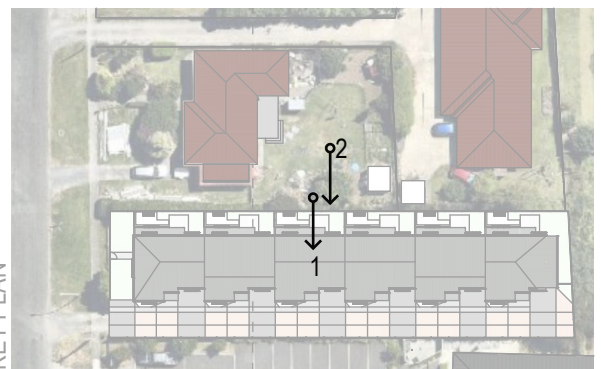
**IMAGE 1**  
1.6M EYE LEVEL 2M FROM BDY FENCE



**IMAGE 2**  
1.6M EYE LEVEL 12M FROM BDY FENCE

The software used to generate the following 3d images as well as the Audio Visual presentations (AVI) is an advanced rendering 3D programme used extensively in Architectural visualization worldwide. The development model used in the programme is referenced in to the visualisation programme from 3D Building Information Model (BIM) software used for the detail design of the project. It is effectively a built electronic true to scale representation of the proposal. The underlying aerial image of the visualisations is from Google and is an accurate representation of the scale of the surrounding built environment. Existing buildings are modelling from a google street view image and various photos, while the bulk of the existing buildings is reasonably accurate being based on the google aerial image, the exterior appearance is modelled from google street view and various photos to give an overall impression of relative scale compared to the proposed development.

The rendered images provided give a true representation to the observer at a height of 1.6m above ground level or terrace level.



KEY PLAN



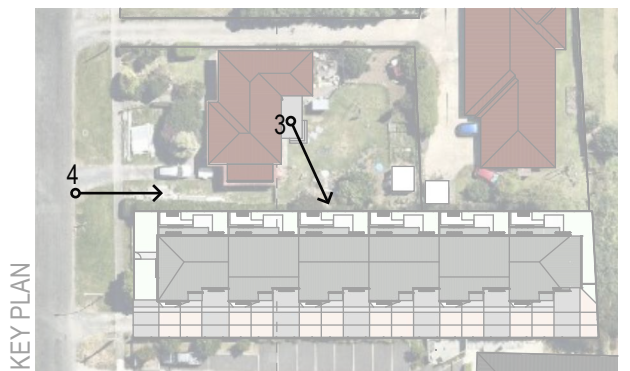
IMAGE 3  
1.6M EYE LEVEL ABOVE REAR TERRACE OF 5 KELLY ROAD



IMAGE 4  
1.6M EYE LEVEL KELLY ROAD VERGE AT 5 KELLY ROAD DRIVEWAY ENTRY



PROPOSED MULTI-RESIDENTIAL DEVELOPMENT  
3 KELLY ROAD, CAMBRIDGE





**IMAGE 5**  
1.6M EYE LEVEL ABOVE ROAD VERGE AT VEHICLE ENTRY CAMBRIDGE ROAD.



**IMAGE 6**  
1.6M EYE LEVEL DRIVEWAY

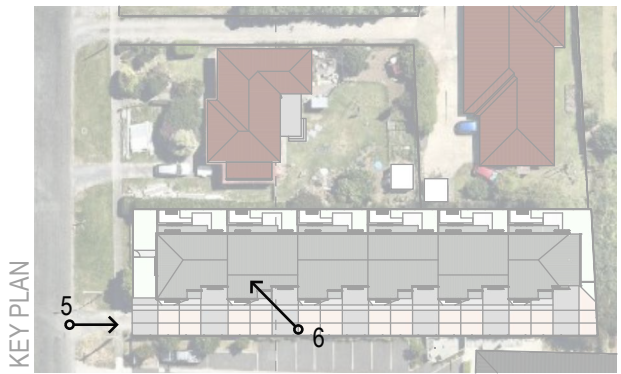




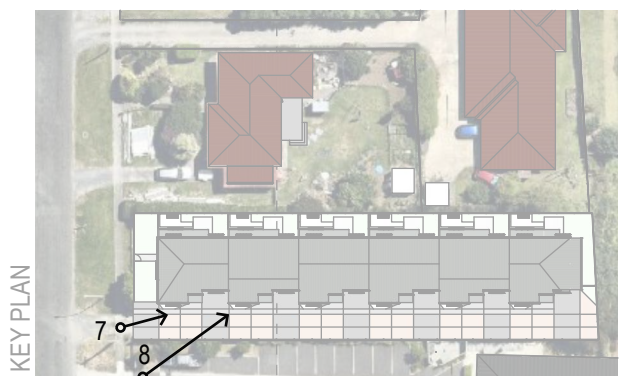
IMAGE 7  
1.6M EYE LEVEL VEHICLE ENTRY



IMAGE 8  
VIEW FROM SOUTH WEST



PROPOSED MULTI-RESIDENTIAL DEVELOPMENT  
3 KELLY ROAD, CAMBRIDGE



KEY PLAN



IMAGE 9  
VIEW FROM NORTH WEST



IMAGE 10  
VIEW FROM NORTH EAST



KEY PLAN



IMAGE 11  
VIEW FROM NORTH

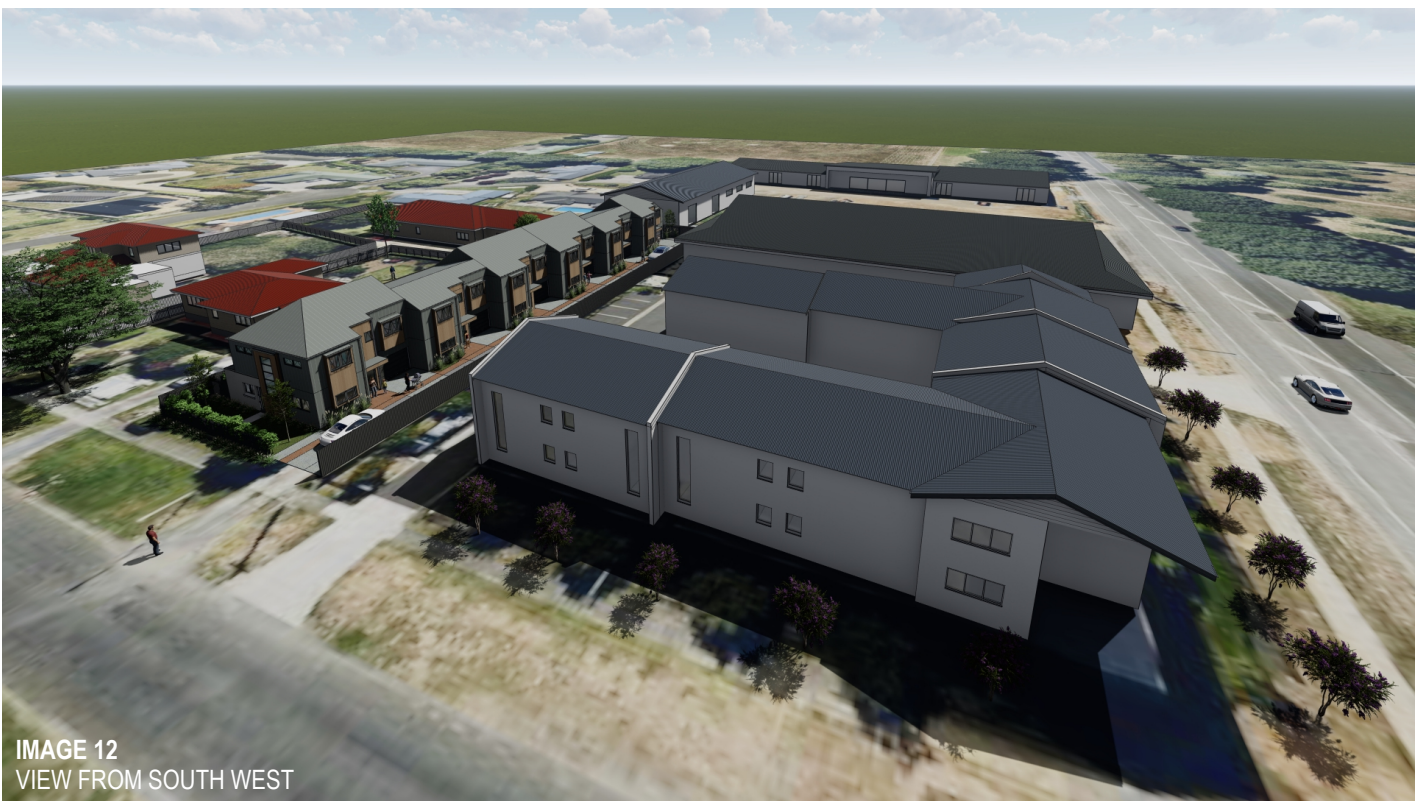


IMAGE 12  
VIEW FROM SOUTH WEST



PROPOSED MULTI-RESIDENTIAL DEVELOPMENT  
3 KELLY ROAD, CAMBRIDGE

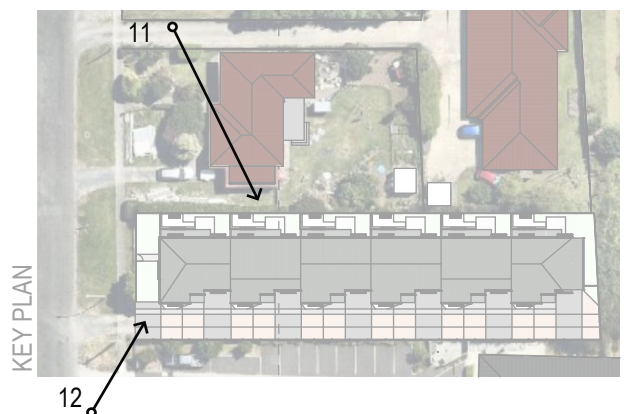




IMAGE 13  
PERMITTED BASELINE DESIGN



IMAGE 14  
PERMITTED BASELINE DESIGN